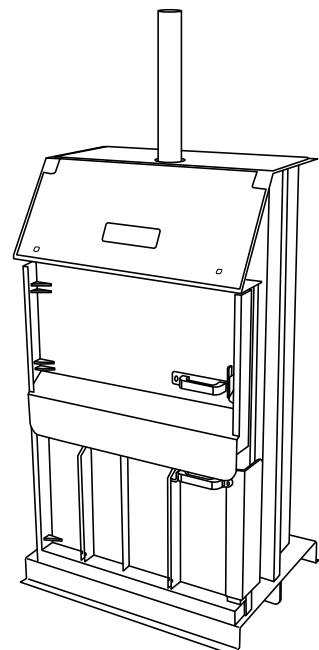


ORWAK

3110-05



Reservdelista
Spare part list
Ersatzteilliste
Liste de pièces détachées
Lista de repuestos



**INNEHÅLLSFÖRTECKNING / TABLE OF CONTENTS /
INHALTSVERZEICHNIS / TABLE DES MATIERES / CONTENIDO**




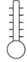

Svenska	English	Deutsch	Français	Español	
VIKTIGT!	NOTE!	WICHTIG!	IMPORTANT!	IMPORTANTE!	3
Behållare	Chamber	Behälter	Chambre	Cámara	4-5
Pressenhet	Press unit	Presseinheit	Unité de compactage	Unidad de compaction	6-7
Hydraulsystem	Hydraulic system	Hydraulisches System	Système hydraulique	Unidad hidráulica	8-9
Elektriskt system	Electrical system	Elektrischer System	Système électrique	Unidad eléctrica	10-11
Kåpor och dekaler	Decals and covers	Abziehbilder und gehäuse	Décalque - coiffe	Etiqueta - caja	12-13
Elschema	Electrical diagram	Elektrisches System	Diagramme électrique	Esquema eléctrico	14-16
Hydraulikschema	Hydraulic diagram	Hydraulisches Schema	Diagramme hydraulique	Esquema hidráulico	17
Injustering av givare	Adjustment of switches	Schalter	Fin de course	Interruptor	18

3110-05

VIKTIGT ! NOTE ! WICHTIG ! IMPORTANT ! IMPORTANTE !

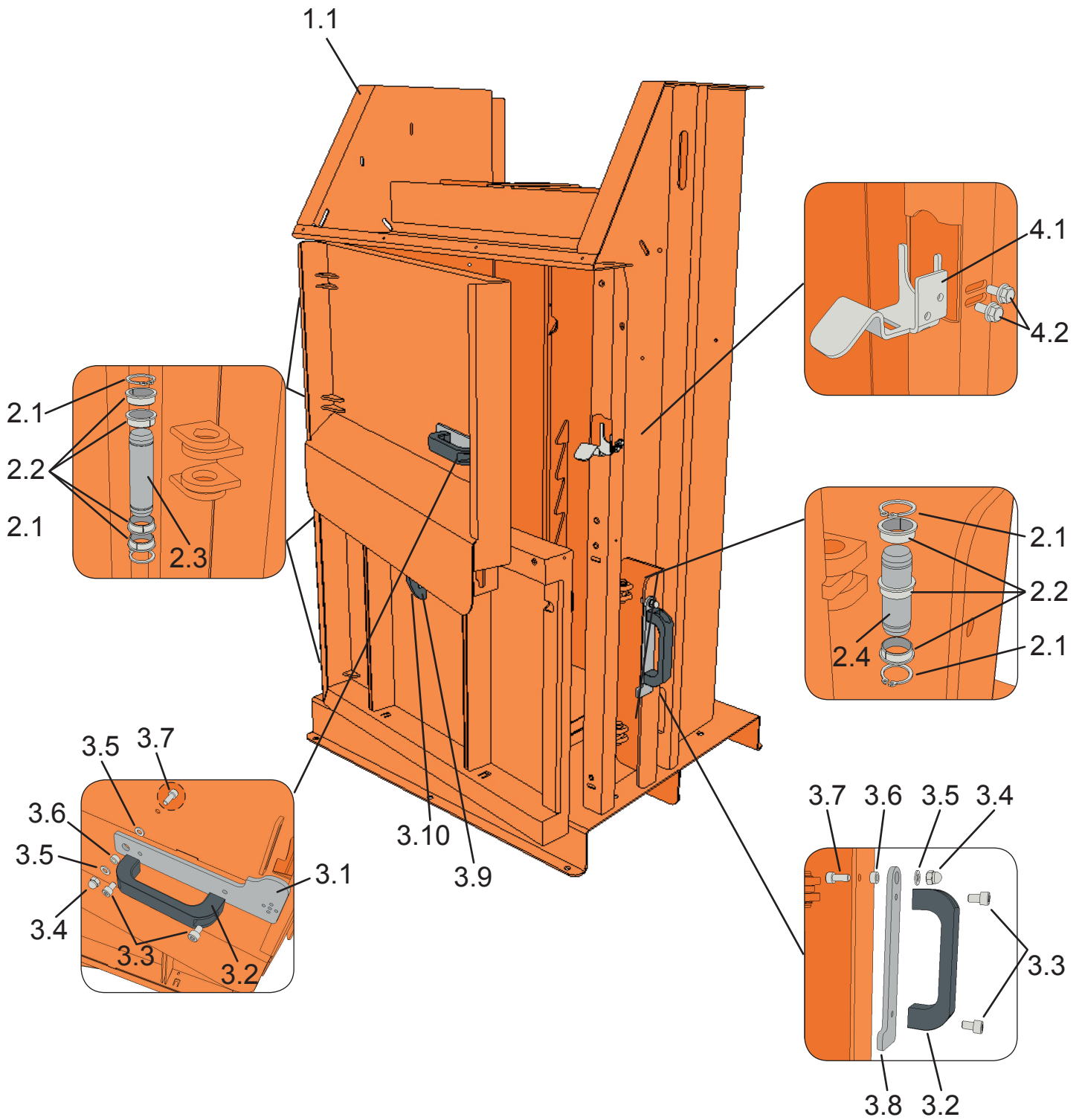
- Vid beställning av reservdelar uppge alltid: Produktnummer, serienummer, reservdelsnummer.
- When ordering spare parts state: Product number, serial number, spare part number.
- Wenn Sie Ersatzteile bestellen bitte immer angeben: Produkt nummer, serie nummer, ersatzteil nummer.
- Pour commande des pièces détachées mentionner: Product numero, no de serie, numero de pièces.
- Mencionar lo Siguiete de pedir repuestos: Producto no, no de serie, no de parte.

Product: 4903110-05

	Box 58 576 22 Sävsjö Sweden	
Type *	Date	
Product No * * *	Weight	
Serial No * *		
V ~ Hz		
kW	A	
 +40 °C	** 	
+5 °C -10 °C **		

- * - XXXX (ex Compactor 3110)
- ** - XXXXX (ex 21001)
- *** - 490XXXX - XX (ex 4903110-05)

3110-05
 BEHÄLLARE / CHAMBER / BEHÄLTER / CHAMBRE / CÁMARA

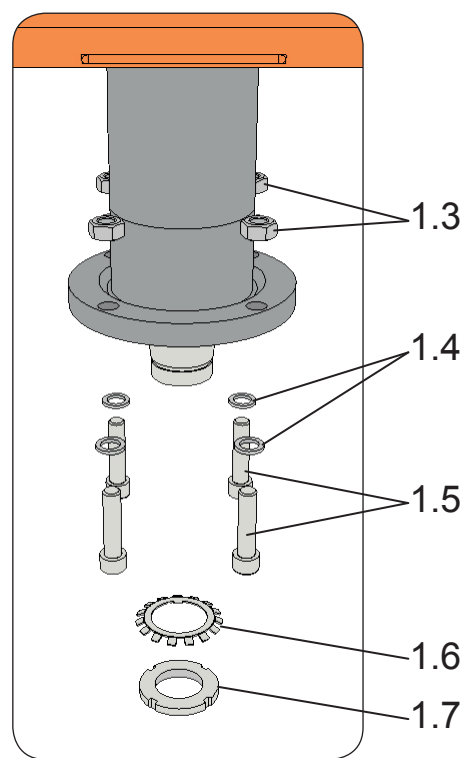
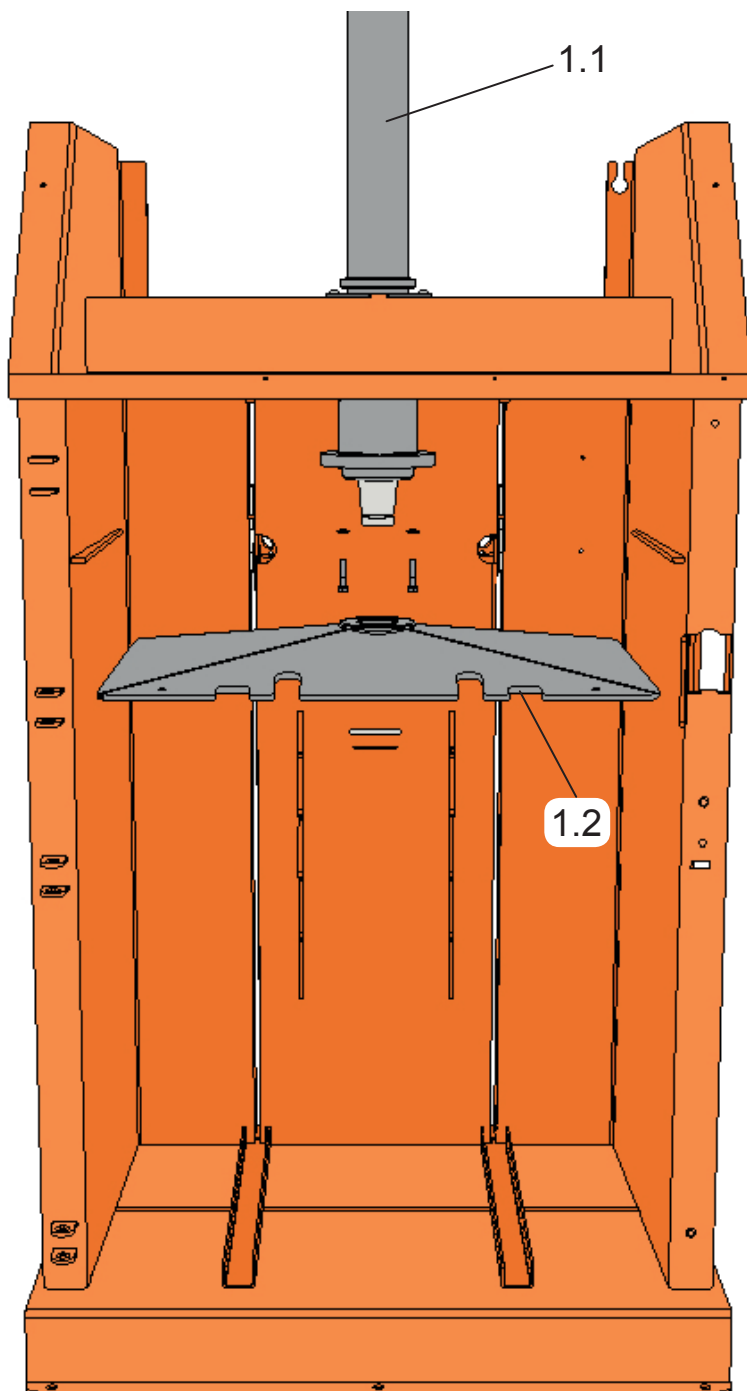


3110-05

BEHÅLLARE / CHAMBER / BEHÄLTER / CHAMBRE / CÁMARA

Item no.	Part No.	Description Svenska	English	Deutsch	Français	Español	Comments
1	4876820-00L	Behållare	Chamber	Behälter	Chambre	Cámara	
1.1	4876821-00L	Stomme	Frame	Rahmen	Cadre	Marco	
1.2	4876780-00L	Lucka	Shutter	Luke	Fermeture	Cubierta	
1.3	4876785-00L	Dörr	Door	Tür	Porte	Puerta	
1.5	4869535-00	Plastfot	Plastic lid	Plastik kappe	Plastique de couvercle	Tapa de plástico	
1.6	4876806-00L	Låsklaff	Lock flap	Lock klappe	Rabat de blocage	Colgajo de bloqueo	
2.1	7353117-00	Spårring	Clip	Sperring	Circlip	Clip	SgA 15
2.2	4876924-00	Glidbussning	Plain bearing	Gleitlager	Coussinet	Cojinete	
2.3	4866650-00	Gångjärnsaxel	Axle	Achsel	Axe	Eje	
2.4	4871405-00	Gångjärnsaxel	Axle	Achsel	Axe	Eje	
3.1	4876809-00	Klinka	Latch	Riegel	Pêne de la serrure	Pestillo de la cerradura	
3.2	4864814-00	Handtag	Handle	Griff	Poignée	Mango	
3.3	7255447-01	Skruv	Screw	Schraube	Vis	Tornillo	MC6S M8x12
3.4	7323118-01	Kupolmutter	Cap nut	Mutter	Écrou	Tuerca	MHM M8
3.5	7341164-01	Bricka	Washer	Unterlegsscheibe	Rondelle	Arandela	BRB 8,4
3.6	4871562-00	Distans	Spacer	Distanz	Entretoise	Espaciador	13-8-6,5
3.7	7255451-01	Skruv	Screw	Schraube	Vis	Tornillo	MC6S M8x20
3.8	4876808-00	Klinka	Latch	Riegel	Pêne de la serrure	Pestillo de la cerradura	
3.9	4870391-00	Bandkniv	Band knife	Bandmesser	Couteau de lien	Cuchillo para banda	
3.10	4868654-00	Skruv	Screw	Schraube	Vis	Tornillo	MRT-GF M5x10
4.1	4876935-00	Låsklack	Securing plate	Sicherungsblech	Lame	Lámina	
4.2	4861688-00	Skruv	Screw	Schraube	Vis	Tornillo	M6SF-TT M6x12

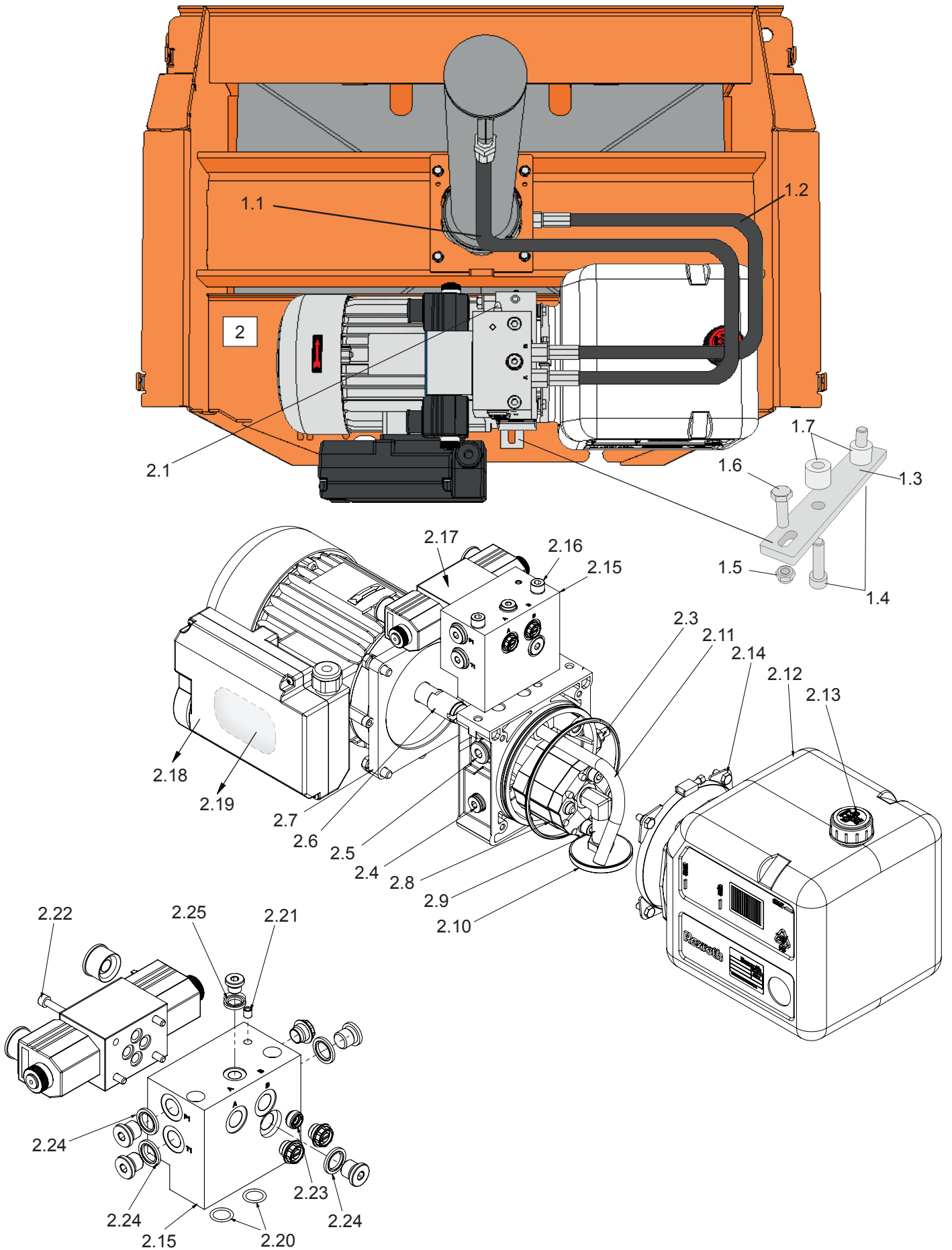
3110-05
PRESSEHET / POWER UNIT / PRESSEINHEIT /
UNITÉ DE COMPACTAGE / UNIDAD DE COMPACTION



3110-05
PRESSEHET / POWER UNIT / PRESSEINHEIT /
UNITÉ DE COMPACTAGE / UNIDAD DE COMPACTION

Item no.	Part No.	Description Svenska	English	Deutsch	Français	Español	Comments
1.1		Hydraulcylinder	Hydraulic cylinder	Hydraulikzylinder	Vérin hydraulique	Cilindro hid ráulico	
1.2	4872463-00	Pressplatta	Press plate	Pressplatte	Plateau de pression	Placa compactar	
1.3	7322118-01	Låsmutter	Lock nut	Gegenmutter	Contre-écrou	Contratuerca	M8
1.4	7341164-01	Bricka	Washer	Scheibe	Rondelle	Arandela	BRB 8,4
1.5	7252457-51	Skruv	Screw	Schraube	Vis	Tornillo	M6S M8x35
1.6	7352123-90	Bricka	Washer	Scheibe	Rondelle	Arandela	MB8
1.7	7325121-30	Mutter	Nut	Mutter	Écrou	Tuerca	KM8

3110-05
HYDRAULSYSTEM / HYDRAULIC SYSTEM /
HYDRAULISCHES SYSTEM / SYSTEM HYDRAULIQUE /
UNIDAD HIDRÁULICA

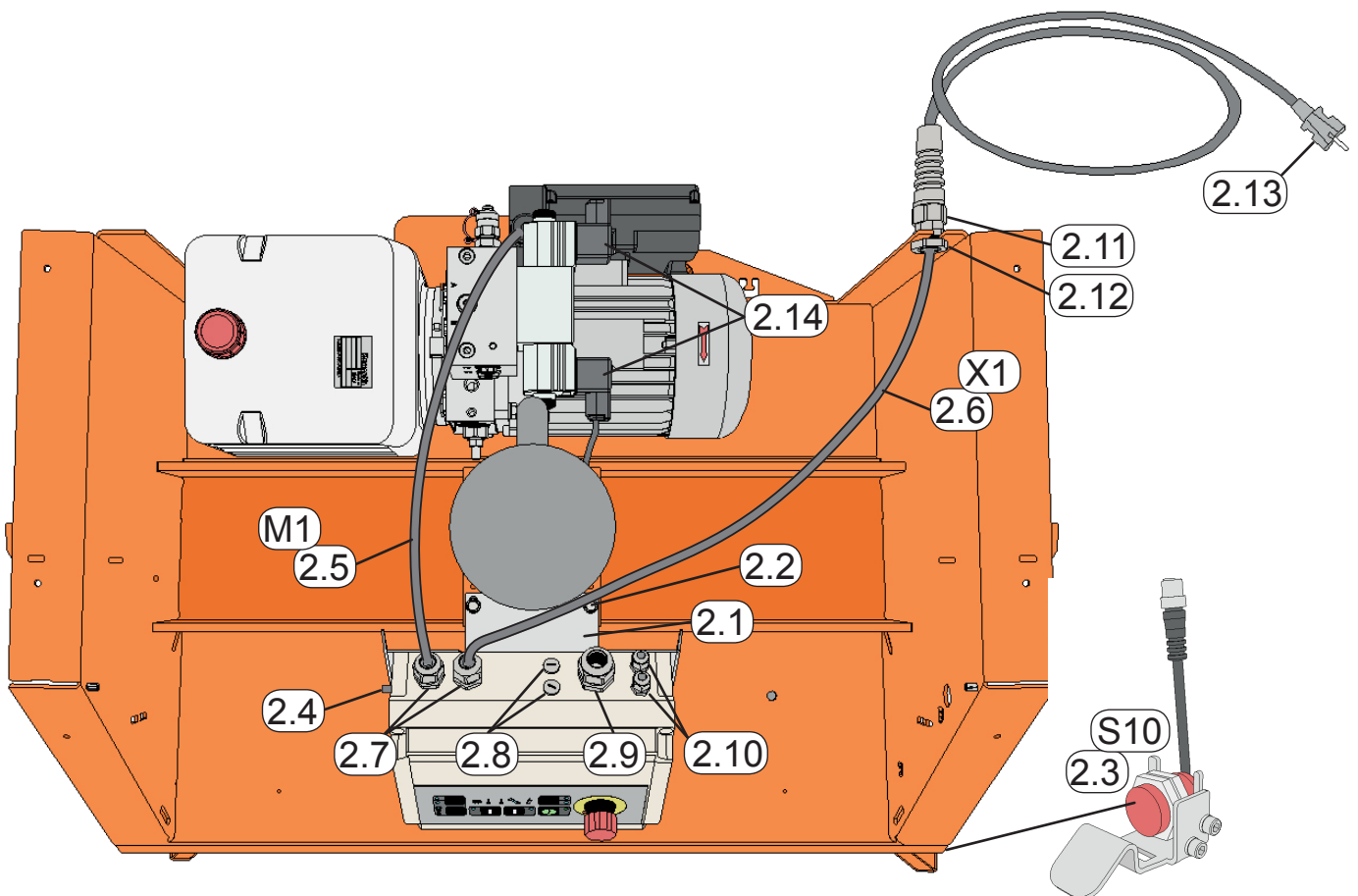
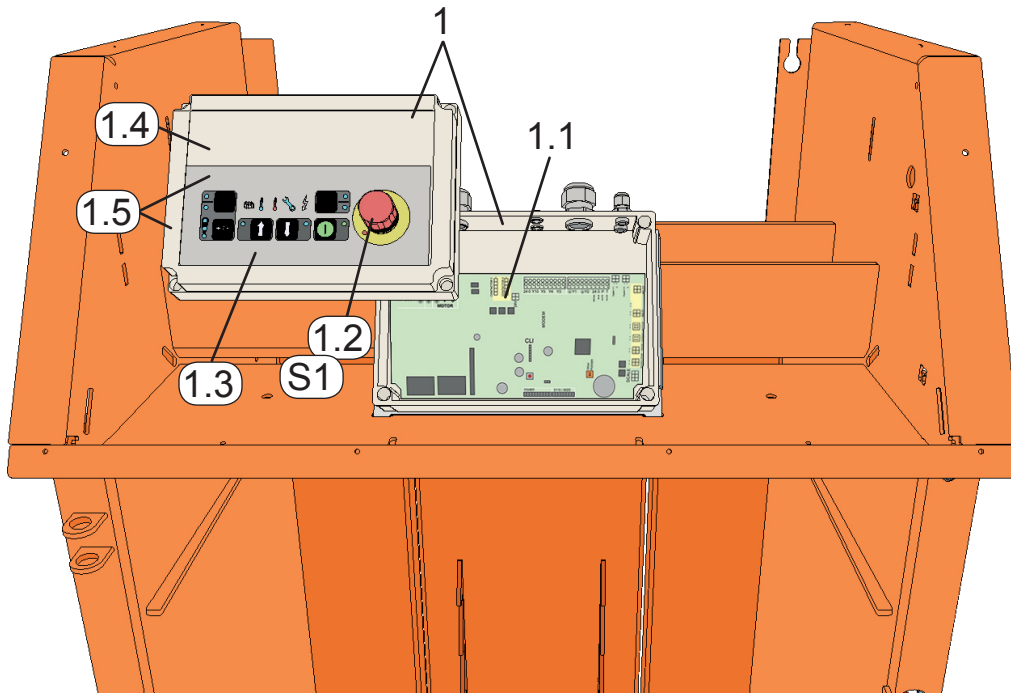


3110-05

HYDRAULSYSTEM / HYDRAULIC SYSTEM / HYDRAULISCHES SYSTEM / SYSTEM HYDRAULIQUE / UNIDAD HIDRÁULICA

Item no.	Part No.	Description Svenska	English	Deutsch	Français	Español	Comments
1.1	4875704-00	Hydraulslang	Hydraulic hose	Hydraulschlauch	Tuyau hydraulique	Manguera hidráulico	From serial no 83510
	4875703-00	Hydraulslang	Hydraulic hose	Hydraulschlauch	Tuyau hydraulique	Manguera hidráulico	To serial no 83510
1.2	4875703-00	Hydraulslang	Hydraulic hose	Hydraulschlauch	Tuyau hydraulique	Manguera hidráulico	
1.3	4868392-00	Aggregatplatta					
1.4	7255499-80	Skruv	Screw	Schraube	Vis	Tornillo	MC6S M10x40 8.8
1.5	7322118-01	Låsmutter	Lock nut	Gegenmutter	Contre écrou	Contratuerca	M8
1.6	7252453-51	Skruv	Screw	Schraube	Vis	Tornillo	M6S M8x25 8.8
1.7	4871526-00	Distans	Spacer	Distanz	Espacement	Separador	
2	4875912-00	Hydraulaggregat	Hydraulic unit	Hydr. syst.	Syst. hydr.	Unidad hid.	From serial no 128881
	4875912-50	Hydraulaggregat utan motor	Hydraulic unit excl. motor	Hydr. syst. ohne Motor	Syst. hydr. sans moteur	Unidad hid. sin motor	From serial no 128881
2.1	4871620-00	Tryck/tempgivare	Pressure/temperature sensor	Druck- / Temperatursensor	Capteur de pression/ température	Sensor de presión/ temperatura	0,1-10V DC, 250 bar temp.
2.3	4876345-02	Tryckbegränsningsventil	Unloading valve	Entlastungsventil	Valve de déchargement	Válvula de descarga	90-250 bar
2.4	4875806-04	Backventil	Check valve	Ventil überprüfen	Clapet anti-retour	Válvula de retención	
2.5	4875912-02	Plugg	Plug	Pfropf	Bouchon	Tapón	
2.6	4875912-06	Koppling	Coupling	Kupplung	Accouplement	Acaplamiento	
2.7	4876345-11	Elmotor	Electrical motor	Elektrischer Motor	Moteur électrique	Motor eléctrico	1,1kW, 230V 50HZ
2.8	4875912-10	Pump	Pump	Pumpe	Pompe	Bomba	1,6 cc
2.9	4876345-15	Sugslang	Suction hose	Saugschlauch	Tuyau d'aspiration	Manguera de succión	
2.10	4875912-13	Sugfilter	Suction filter	Saugfilter	Filtre d'aspiration	Filtro de succión	
2.11	4875912-09	Returrör	Return pipe	Rohr zurückbringen	Tuyau de retour	Tubería de retorno	
2.12	4876345-23	Hydraultank	Oil tank	Ölbehälter	Réservoir	Depósito de aceite	
2.13	4876509-19	Andningsfilter	Air filter	Filter	Filtre à air	Taón con filtro	1/2"
2.14	4875912-16	Monteringskit	Assembly kit	Montagesatz	Kit de montage	Kit de montaje	
2.15	4875912-05	Ventilblock, kompl	Adapter	Block	Adaptateur	Bloque	
2.16	4876345-14	Skruv	Screw	Schraube	Vis	Tornillo	M8x140
2.17	4871617-00	Ventil	Valve	Ventil	Soupape	Valvula	
2.18	4876345-29	Ellåda till motor	Electrical box	Elektrische Box	Boîte électrique	Caja electrica	
2.19	4876345-30	Kondensator	Capacitor	Kondensator	Condensateur	Condensador	
2.20	4875912-17	O-ring	O-ring	Dichtungsring	Joint torique	Junta torica	
2.21	4875912-18	Plugg	Plug	Pfropf	Bouchon	Tapón	
2.22	4875912-19	Skruv	Screw	Schraube	Vis	Tornillo	
2.23	4875912-21	Backventil	Check valve	Ventil überprüfen	Clapet anti-retour	Válvula de retención	
2.24	4861260-10	Gummistålbricka	Rubber steel	Gummistahlunterlegsscheibe	Caoutchouc acier rondelle	Caucho acero arandela	1/4"
2.25	4861260-70	Gummistålbricka	Rubber steel	Gummistahlunterlegsscheibe	Caoutchouc acier rondelle	Caucho acero arandela	BSP 1/8"

ELEKTRISKA SYSTEMET / ELECTRICAL SYSTEM /
ELEKTRISCHES SYSTEM / SYSTEM ELECTRIQUE / UNIDAD ELÉCTRICA



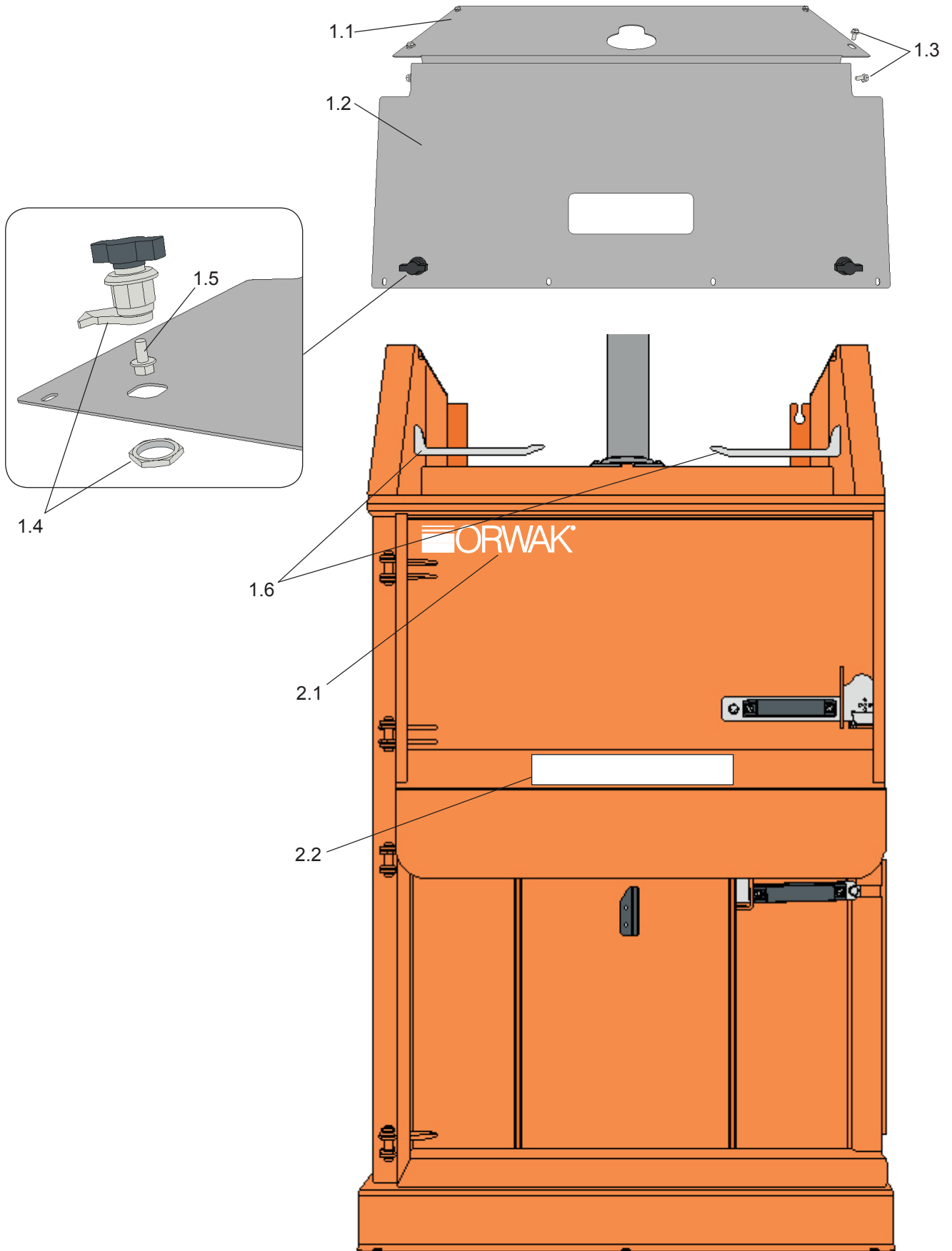
3110-05

ELEKTRISKA SYSTEMET / ELECTRICAL SYSTEM / ELEKTRISCHES SYSTEM / SYSTEM ELECTRIQUE / UNIDAD ELÉCTRICA

Item No.	Part No.	Description Svenska	English	Deutch	Francais	Español	Comments
1	4875939-00	Ellåda	Enclosure	Kiste	Boîte	Caja	
1.1	4875913-01	Styrkort/Kretskort	Printed curcuit board	Elektronikplatte	Plaque d électronique	Place d electrónica	A1
1.2	4876455-00	Nödstopp	Emergency stop	Notausschalter	Bouton arrêt	Boton stop	
S1	4872743-00	Kabel, nödstopp	Cable, emergency stop	Kabel, Notausschalter	Câble, Bouton arrêt	Cable Boton stop	WS1
1.3	4875760-00	Manöverpanel	Operating panel	Bedienepult	Panneau de commande	Panel de operación	
1.4	4876025-00	Lock	Cover	Deckel	Chape	Tapón	Ensto
	4876086-00						Fibox
1.5	4880652-00	Manöverpanel och lock	Operating panel and cover	Bedinenpult + deckel	Plaque d commande + chape	Placa d manejo + tapa	Ensto
	4880652-01						Fibox
2.1	4876838-00	Fäste till ellåda	Holder for enclosure	Halter für Kiste	Porteoutil	Soporte	
2.2	4861688-00	Skruv	Screw	Schraube	Vis	Tornillo	M6SF-TT M6x12
2.3	4870989-00	Magnetbrytare	Magnetic switch	Magnetschalter	Interrupteur magnétique	Interruptor magnético	
2.4	4875942-00	Säkring	Fuse	Sicherung	Fusibles	Fusible	Q1 10A
2.5	4875936-00	Kabel	Cable	Kabel	Câble	Cable	WM1
	4875940-00	Kabel	Cable	Kabel	Câble	Cable	WM1 (US)
2.6	4875935-00	Kabel	Cable	Kabel	Câble	Cable	WX1
	4875938-00	Kabel	Cable	Kabel	Câble	Cable	WX1 (US)
2.7	4867504-00	Kabelförskruvning					M20
2.8	4869432-00	Ej till salu					
2.9	4869241-00	Kabelgenomföring	Cable casing	Kabeldurchführung	Gaine	Pasamuros d. cable	M25
2.10	4869430-00	Kabelförskruvning	Cable casing	Kabeldurchführung	Gaine	Pasamuros d. cable	M12
2.11	4869671-00	Kabelförskruvning	Cable casing	Kabeldurchführung	Gaine	Pasamuros d. cable	
2.12	4869243-00	Kontramutter	Lock nut	Kontramutter	Écrou de retour	Contra tuerca	M20
2.13	4862428-00	Stickpropp	Plug	Stecker	Contact	Enchufe	(230V, 50Hz)
	4862021-00	Stickpropp	Plug	Stecker	Contact	Enchufe	(115V, 60Hz)
	4862895-00	Stickpropp	Plug	Stecker	Contact	Enchufe	(3x200V, 50/60Hz)
2.14	4868063-00	Ventilkontakt	Plug	Stecker	Contact	Enchufe	
	4876093-00	Elstyrning, komplett	Control box, complete	Steuereinheit	Commande	Guía	(230V, 50Hz)
	4876532-00	Elstyrning, komplett	Control box, complete	Steuereinheit	Commande	Guía	(115V, 60Hz)

3110-05

KÅPOR OCH DEKALER / COVERS AND DECALS / ABZIEHBILDER UND
GEHÄUSE / DÉCALQUE - COIFFE / ETIQUETA - CAJA

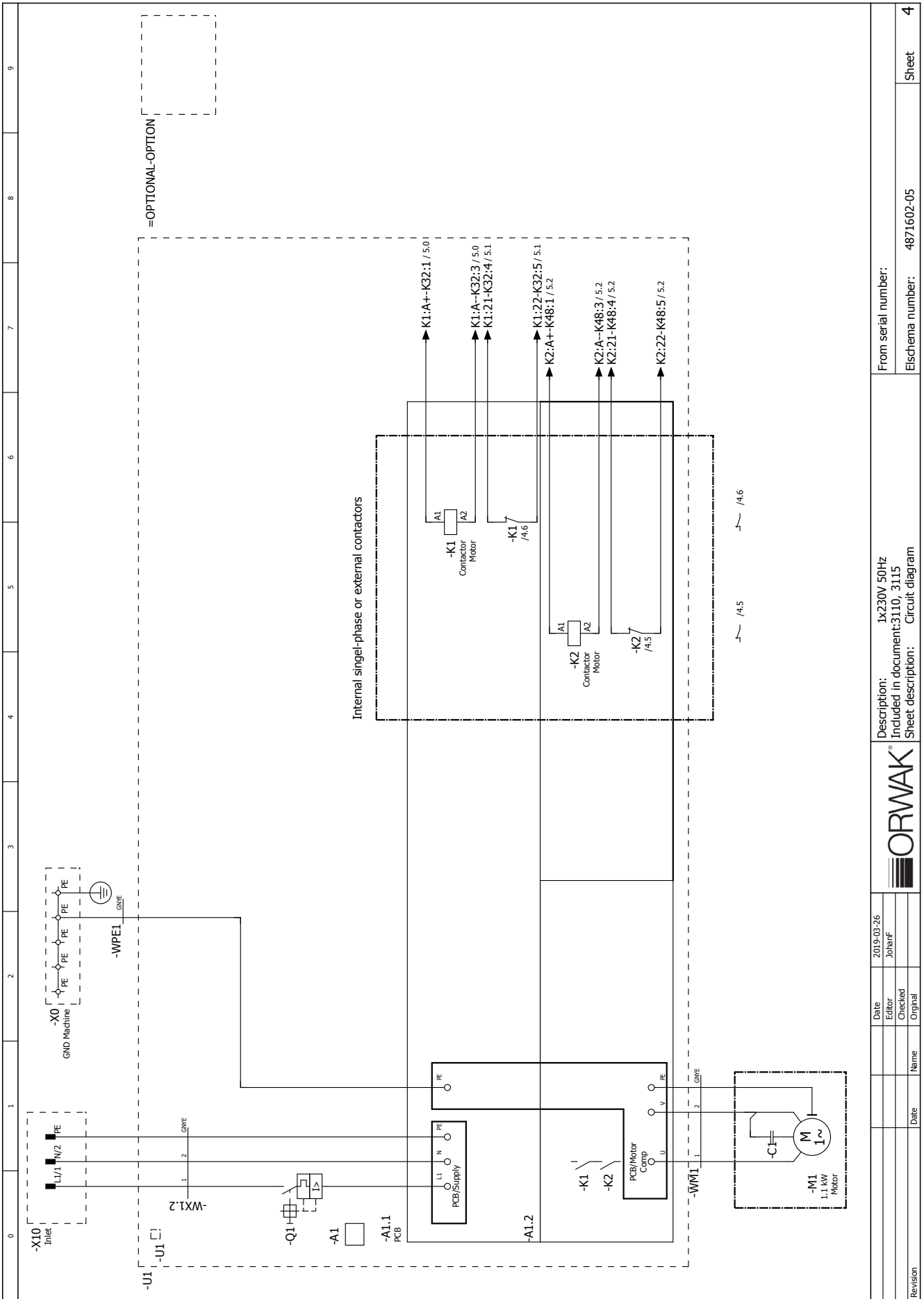


3110-05

**KÅPOR OCH DEKALER / COVERS AND DECALS / ABZIEHBILDER UND
GEHÄUSE / DÉCALQUE - COIFFE / ETIQUETA - CAJA**

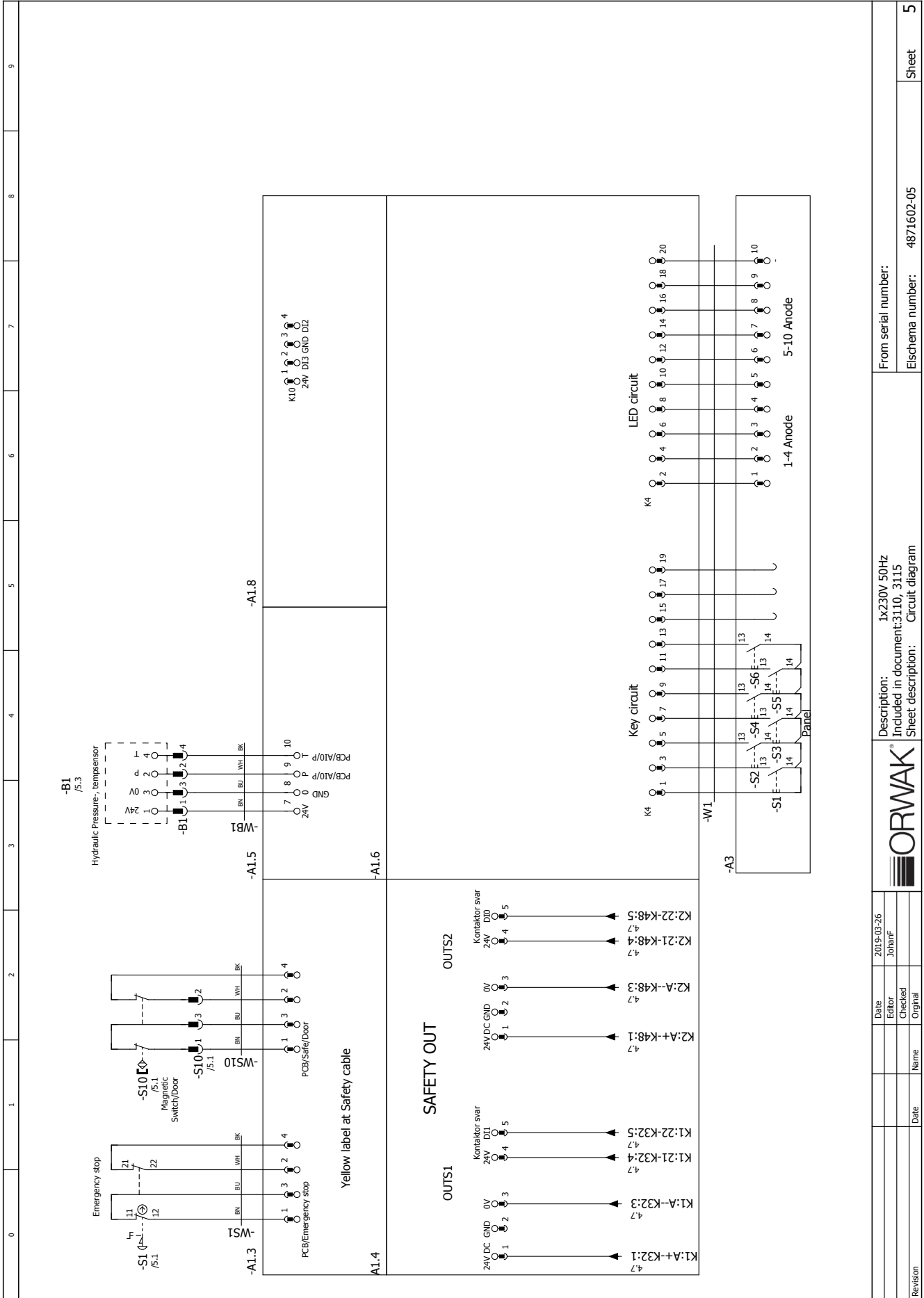
		Description					
Part No.	Svenska	English	Deutsch	Français	Español	Comments	
1.1	4876927-00 Luca bak	Rear shutter	Luke hinyte	Couvercle arrière	Cubierta posterior		
1.2	4876926-00 Lucka fram	Front shutter	Luke vorne	Couvercle frontal	Cubierta frontal		
1.3	4861688-00 Skruv	Screw	Schraube	Vis	Tornillo	M6SF-TT M6x12	
1.4	4867873-00 Lås	Lock	Loch	Bras	Gancho		
1.5	7252366-61 Skruv	Screw	Schraube	Vis	Tornillo	M6SF-GF M6x12 FZB	
1.6	4876941-00 Bandhållare	Band holder	Bandhalter	Support de lien	Suporte para cinta		
2.1	4871496-00 Dekal "ORWAK"	Decal "ORWAK"	Abziehbild "ORWAK"	Décalque "ORWAK"	Etiqueta "ORWAK"		
2.2	4875767-00 Instruktionsdekal	Instruction plate	Anleitungsschild	Plaquette de instruction	Letrero de instrucción		

ELKRETSSCHEMA / ELECTRICAL DIAGRAM / ELEKTRISCHES SYSTEM /
 DIAGRAMME ÉLECTRIQUE / ESQUEMA ELÉCTRICO



Revision		Date		Name		Date		Checked		Original		Date		Editor		Johann F.		2019-03-26		Date		Description:		1x230V 50Hz		Included in document:3110, 3115		Sheet description: Circuit diagram		From serial number:		4871602-05		Eischema number:		4871602-05		Sheet		4	
----------	--	------	--	------	--	------	--	---------	--	----------	--	------	--	--------	--	-----------	--	------------	--	------	--	--------------	--	-------------	--	---------------------------------	--	------------------------------------	--	---------------------	--	------------	--	------------------	--	------------	--	-------	--	---	--

ELKRETSSCHEMA / ELECTRICAL DIAGRAM / ELEKTRISCHES SYSTEM /
 DIAGRAMME ÉLECTRIQUE / ESQUEMA ELÉCTRICO



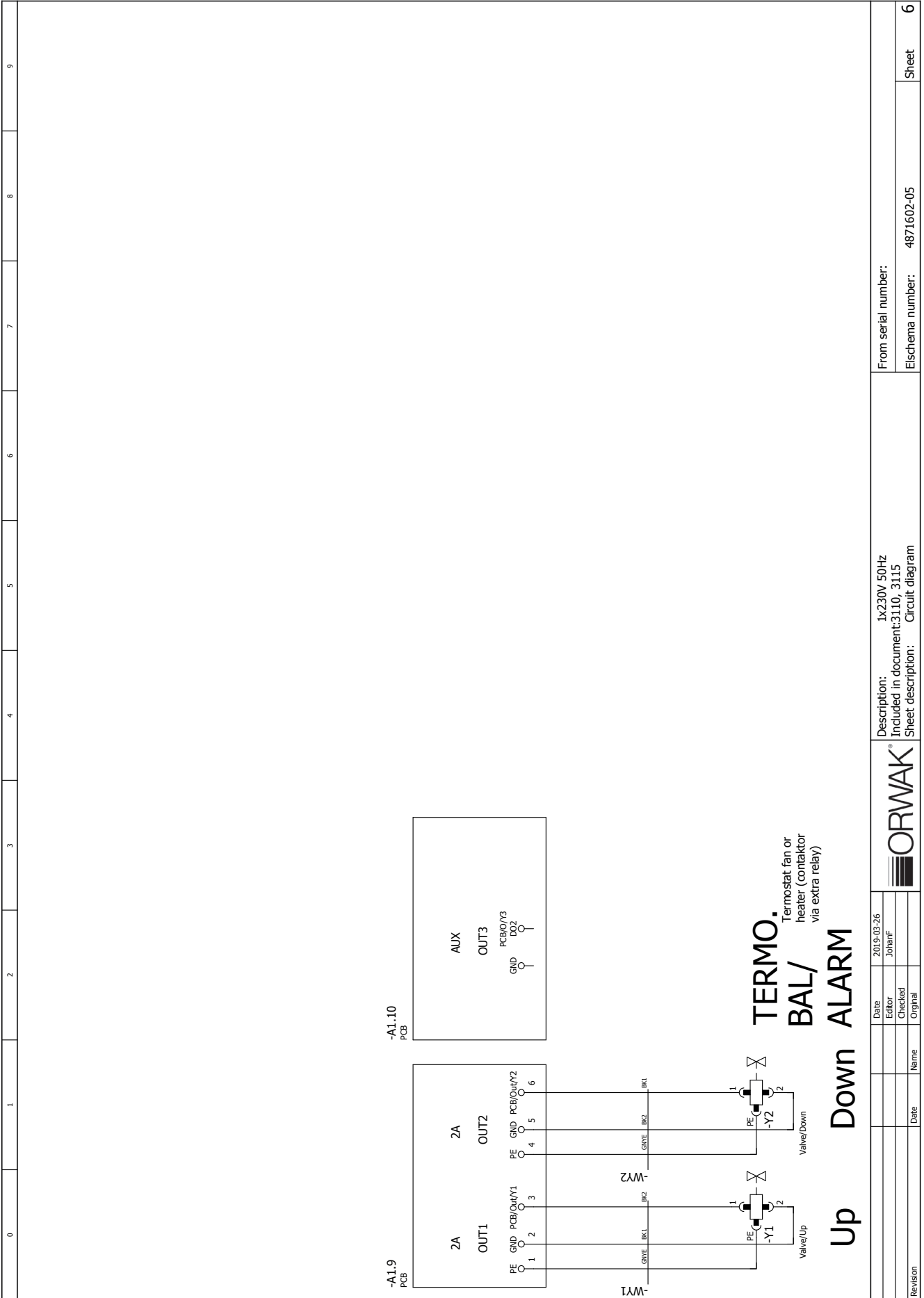
SP 3110-05, 2019-08, Edi 2, From serial No. 142825-

0	1	2	3	4	5	6	7	8	9
Description: 1x230V 50Hz Included in document: 3110, 3115 Sheet description: Circuit diagram									
From serial number: 4871602-05									
Sheet number: 5									



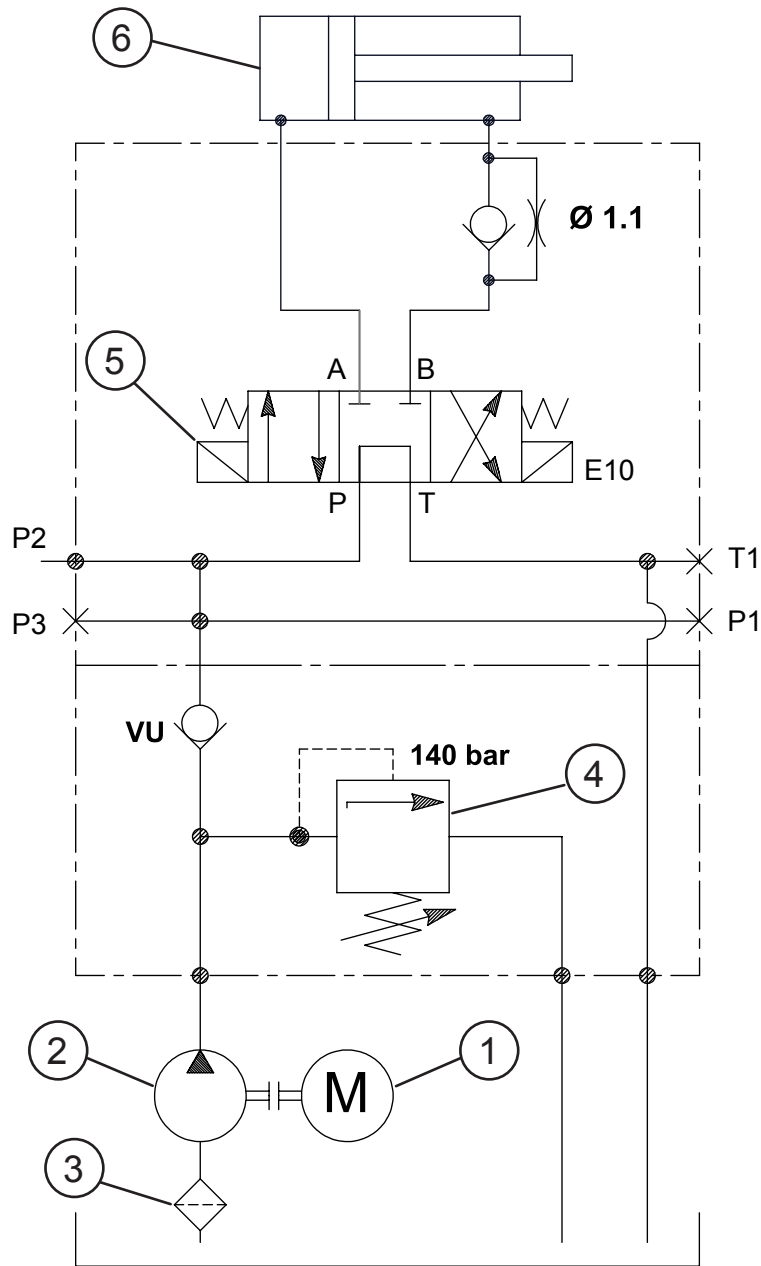
Date	2019-03-26
Editor	Johnif
Checked	
Original	
Revision	
Date	
Name	

ELKRETSSCHEMA / ELECTRICAL DIAGRAM / ELEKTRISCHES SYSTEM /
 DIAGRAMME ÉLECTRIQUE / ESQUEMA ELÉCTRICO



Revision	Date	Name	Checked	Date	Editor	2019-03-26	JohannF	Description: 1x230V 50Hz Included in document:3110, 3115 Sheet description: Circuit diagram	From serial number:
									Elschema number: 4871602-05
									Sheet
									6

HYDRAULIKSCHEMA / HYDRAULIC DIAGRAM / HYDRAULISCHES SYSTEM /
 DIAGRAMME HYDRAULIQUE / ESQUEMA HIDRÁULICO



Item Description
 no. Svenska

- 1 Elmotor
- 2 Pump
- 3 Sugfilter
- 4 Överströmsventil
- 5 Riktningventil
- 6 Presscylinder

English

- Electrical motor
- Pump
- Suction filter
- Overload valve
- Directional valve
- Press cylinder

Deutsch

- Elektrischer Motor
- Pumpe
- Saugsieb
- Ventil
- Richtungventil
- Presszylinder

Français

- Moteur électrique
- Pompe
- Filtre
- Soupape
- Soupape de direction
- Verin de compactage

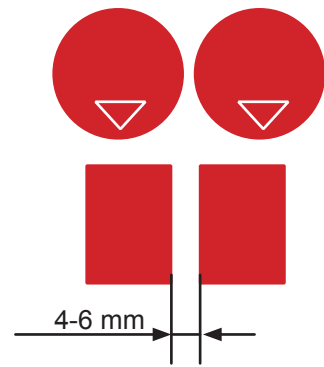
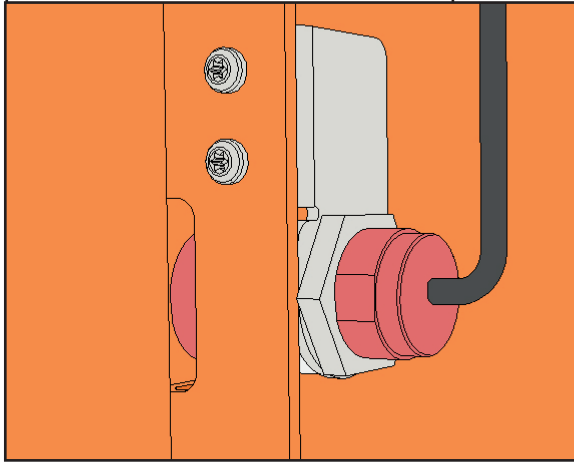
Español

- Motor eléctrico
- Bomba
- Filtro
- Válvula
- Válvula de dirección
- Cilindro de compactacion

3110-05

INJUSTERING AV BRYTARE / ADJUSTMENT OF SWITCHES / SCHALTER / FIN DE COURSE / INTERRUPTOR

S10 - door magnet switch



COMPACTION SOLUTIONS FOR MOST TYPES OF WASTE

ORWAK develops solutions for sorting and recycling waste materials that improve business efficiency, contribute to a cleaner working and natural environment to provide the best total waste handling economy.

We offer an innovative range of products that promotes sorting at source and make waste management more profitable.

ORWAK AB
Box 58
S-57622 Sävsjö
SWEDEN
Tel: +46-(0)382-15700
info@orwak.com

www.orwak.com

 ORWAK®