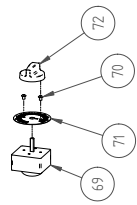
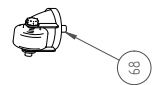


OPTIONAL :

TIMER



WHEELS



LISTA PARTICOLARI/PARTS LIST 6/10/15KG

N° Ref.	Sub n° Ref.	Italian	English	Quantity
1	1.6	carpenteria SUN 6	carpentry SUN 6	1
	1.10-15	carpenteria SUN 10-15	carpentry SUN 10-15	1
2	2.6	coperchio testa SUN 6	head cover SUN 6	1
	2.10-15	coperchio testa SUN 10-15	head cover SUN 10-15	1
3	3.6	coperchio dietro SUN 6	back cover SUN 6	1
	3.10-15	coperchio dietro SUN 10-15	back cover SUN 10-15	1
4	4.6	coperchio sotto SUN 6	lower cover SUN 6	1
	4.10-15	coperchio sotto SUN 10-15	lower cover SUN 10-15	1
5	5.6	riparo farina SUN 6	flour guard SUN 6	1
	5.10-15	riparo farina SUN 10-15	flour guard SUN 10-15	1
6		vite VTButton M4x5 Inox	screw M4x5 Inox	10
7		vite VTButton M8x10 Zn	screw M8x10 Zn	4
8		pieдино in gomma	rubber pad	4
9	9.6	catena vasca SUN 6	chain bowl SUN 6	1
	9.10	catena vasca SUN 10	chain bowl SUN 10	1
	9.15	catena vasca SUN 15	chain bowl SUN 15	1
10	10.6	piantone SUN 6	breaking bar SUN 6	1
	10.10-15	piantone SUN 10-15	breaking bar SUN 10-15	1
11		rondella M6 Zn	washer M6 Zn	17
12		vite VTE M6x12 Zn	screw M6x12 Zn	2
13		vite VTCCE M8x10 Zn	screw M8x10 Zn	1
14		rondella M8x24 Zn	washer M8x24 Zn	1
15		grano M6x15	dowel M6x15	3
16		pignone vasca Z55 3/8"	bowl sprocket Z55 3/8"	1
17		vite VTE M6x30 Zn	screw M6x30 Zn	4
18		cuscinetto a sfere 6004 RS	ball bearing 6004 2RS	3
19		chiavetta 6x6x12	key 6x6x12	1
20	20.6	vasca SUN 6	bowl SUN 6	1
	20.10	vasca SUN 10	bowl SUN 10	1
	20.15	vasca SUN 15	bowl SUN 15	1
21	21.6	spirale SUN 6	spiral arm SUN 6	1
	21.10-15	spirale SUN 10-15	spiral arm SUN 10-15	1
22		chiavetta 5x5x20	key 5x5x20	3
23		cuscinetto a sfere 6202 2RS	ball bearing 6202 2RS	4
24		viti VTTonda QST M6x30 Inox	s/s screw M6x30	4
25		supporto vasca	bowl support	1
26		supporto spirale	spiral arm support	1
27		dado M6 Zn	nut M6 Zn	4
28		pignone spirale Z19 3/8"	spiral arm sprocket Z19 3/8"	1
29		catena spirale	spiral arm chain	1
30		fincorsa	limit-switch	1
31		dado M10 bassi Zn	nut M10 Zn	3
32		anello seeger Ø12 E	seeger ring Ø 12 E	1

N° Ref.	Sub n° Ref.	Italian	English	Quantity
33		cusc. a sfera 61801 2RS	ball bearing 61801 2RS	1
34		pignone Z12 3/8"	sprockets Z12 3/8"	1
35		chiavetta 5x5x10	key 5x5x10	1
36		puleggia dentata Z 72	toothed pulley Z 72	1
37		vite VTSPEI M5x15 Zn	screw M5 x15 Zn	3
38		albero rinvio	intermediate shaft	1
39		spina elettrica Schuko	plug Schuko	1
40		pressacavo PG 11	cable gland PG11	1
41		dado PG 11	nut PG 11	1
42		griglia protezione SUN 6 Inox	s/s safety grid SUN 6	1
		griglia protezione SUN 10 Inox	s/s safety grid SUN 10	1
		griglia protezione SUN 15 Inox	s/s safety grid SUN 15	1
43		dado autobloccante M6	self-locking nut M6	2
44		camma fincorsa	cam limit switch	1
45		grano M4x5	dowel M4x5	1
46		pulsante 0-1	push-button 0-1	1
47		ghiera pulsante	Locking ring	1
48		contatti (1nc+1no+1luce)	contacts (1nc+1no+1light)	1
49		potenziometro	potentiometer	1
50		adesivo	sticker	1
51		manopola	knob	1
52		pignone Z24 3/8"	sprocket Z24 3/8"	1
53	53.6	albero trasm. vasca SUN 6	bowl drive shaft SUN 6	1
	53.10-15	albero trasm. vasca SUN 10-15	bowl drive shaft SUN 10-15	1
54		vite VTCCE M6x15 Zn	screw M6x15 Zn	5
55		supporto alto albero	shaft upper support	1
56		supporto basso albero	shaft lower support	1
57		vite VTCCE M6x25 Zn	screw M6x25 Zn	2
58		pignone Z10 3/8"	sprocket Z10 3/8"	1
59		vite VTE M5x20 Zn	screw M5x20 Zn	1
60		rondella M5	washer M5	1
61		rondella alta	washer	1
62		puleggia dentata Z16	toothed pulley Z16	1
63		cinghia dentata XL160	toothed belt XL160	1
64		motore	motor	1
65		Inverter	inverter	1
66		vite VTButton M6x10	screw M6x10	1
67		eccentrico	eccentric	1
68		ruote	wheels	4
69		timer	timer	1
70		vite VTButton M4x5	screw M4x5	2
71		quadrante	clock face	1
72		manopola timer	timer knob	1