

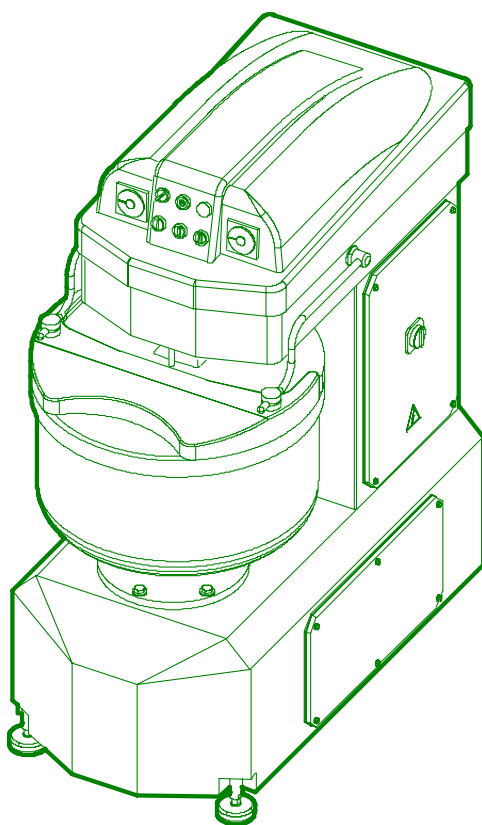
## SPARE PARTS

### SPIRAL MIXERS WITH FIXED BOWL

MODEL

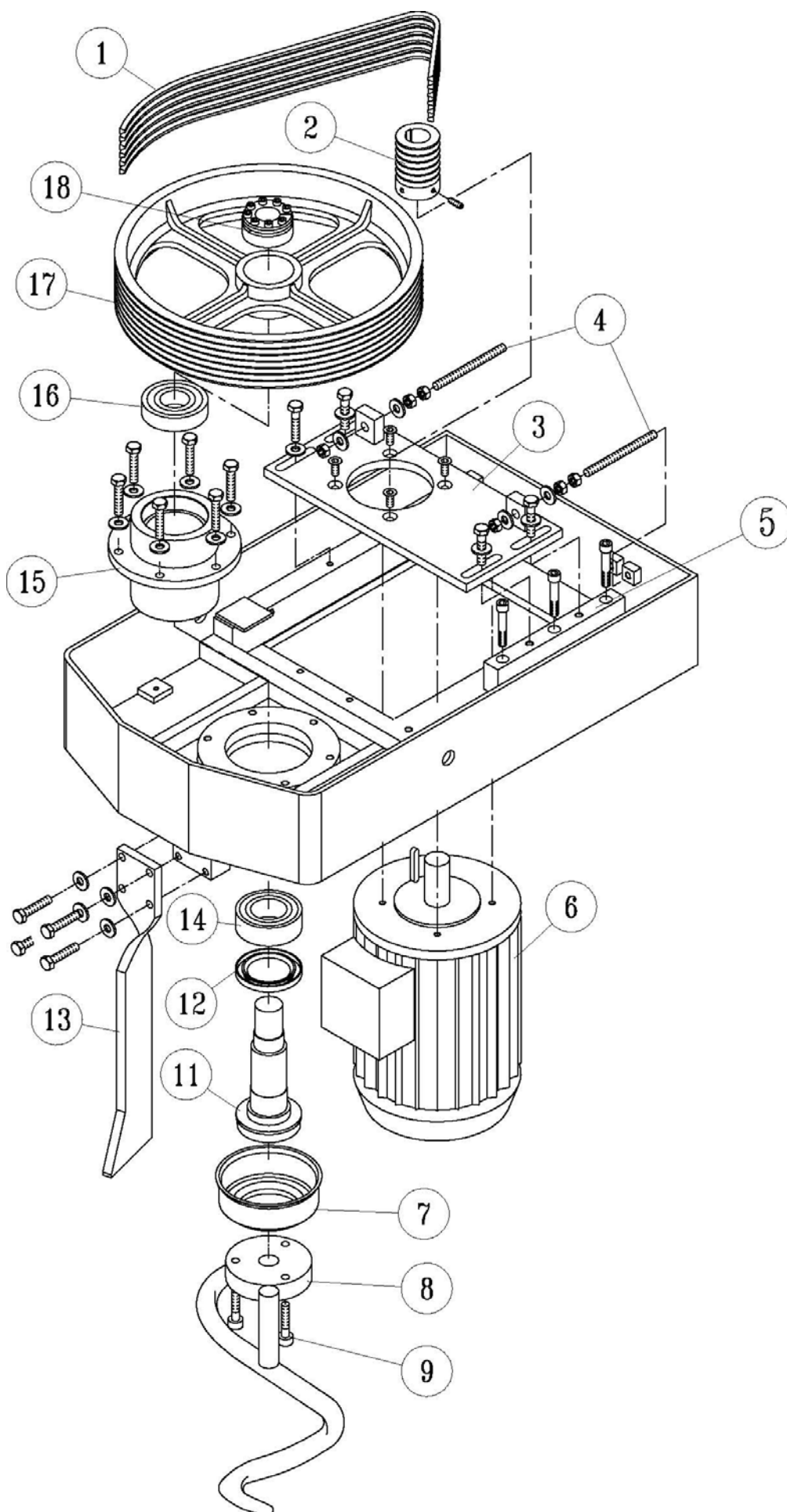
M160  
M200

M160 PREMIUM  
M200 PREMIUM



A MACHINE DESIGNED AND CONSTRUCTED  
FOR MIXING BREAD AND PASTRY DOUGH

Table 1: Head group of model M

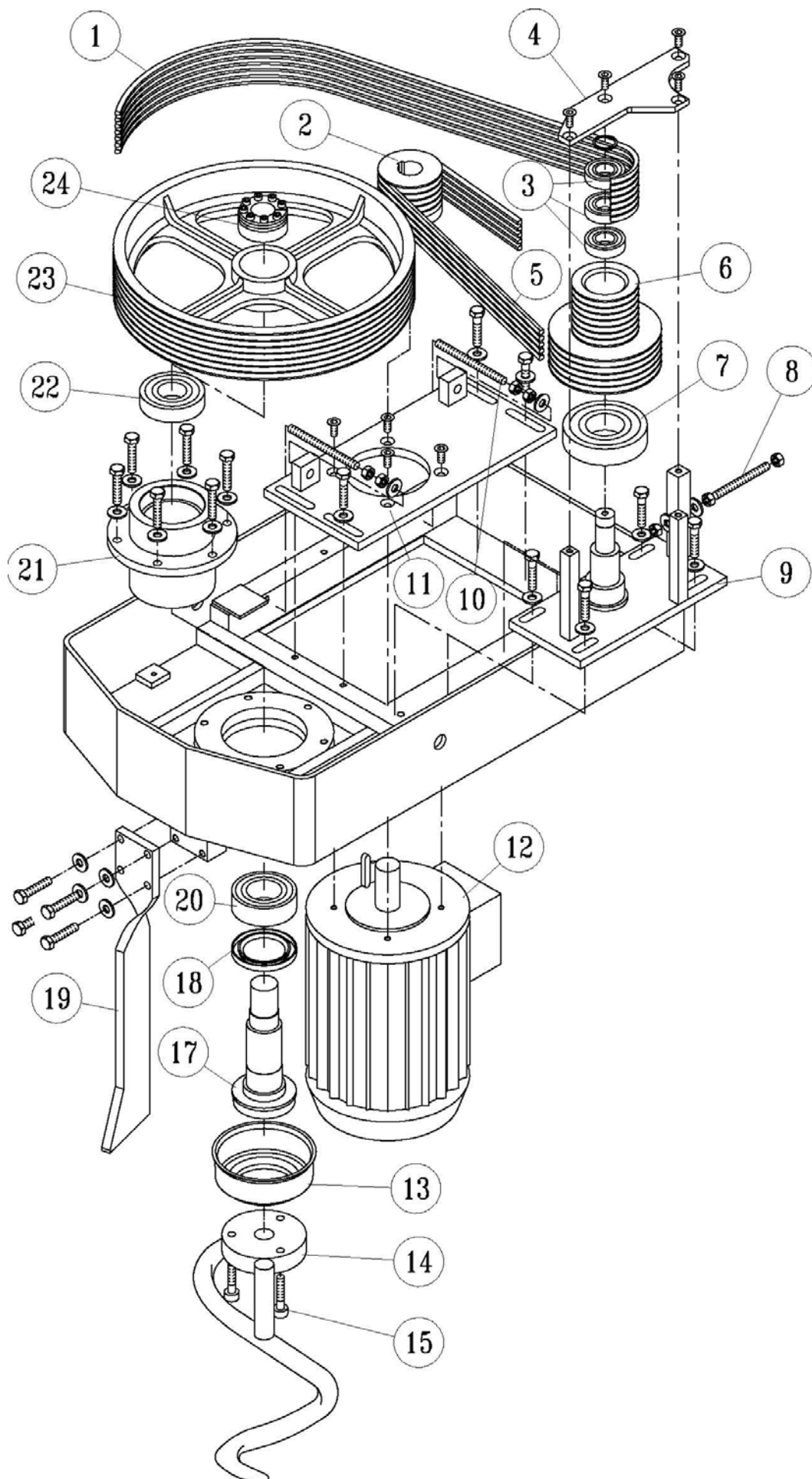


## List 1: Head group of model M

POS.	DESCRIPTION	Qty	CODE
1	Belt SPZ 1987	9	C01220
2	Motor pulley	1	D11118
3	Spiral motor slide	1	D13100
4	Tie rod M12	2	C02914
5	Motor support	1	D04200
6	Motor	1	*
7	Sump	1	D08203
8	Spiral	1	D12202
9	Screw	3	D15002
10			
11	Spiral shaft	1	D01101
12	MIM ring 95/130x12	1	C11902
13	Column with foot	1	D12102
	Column without foot	1	D12105
14	Bearing 3215	1	C00102
15	Spiral shaft support	1	D04003
16	Bearing 6313 2RS	1	C00005
17	Pulley	1	D11104
18	Locking assembly	1	C01302

\* see wiring diagrams

Table 2: Head group of model M PREMIUM



## List 2: Head group of model M PREMIUM

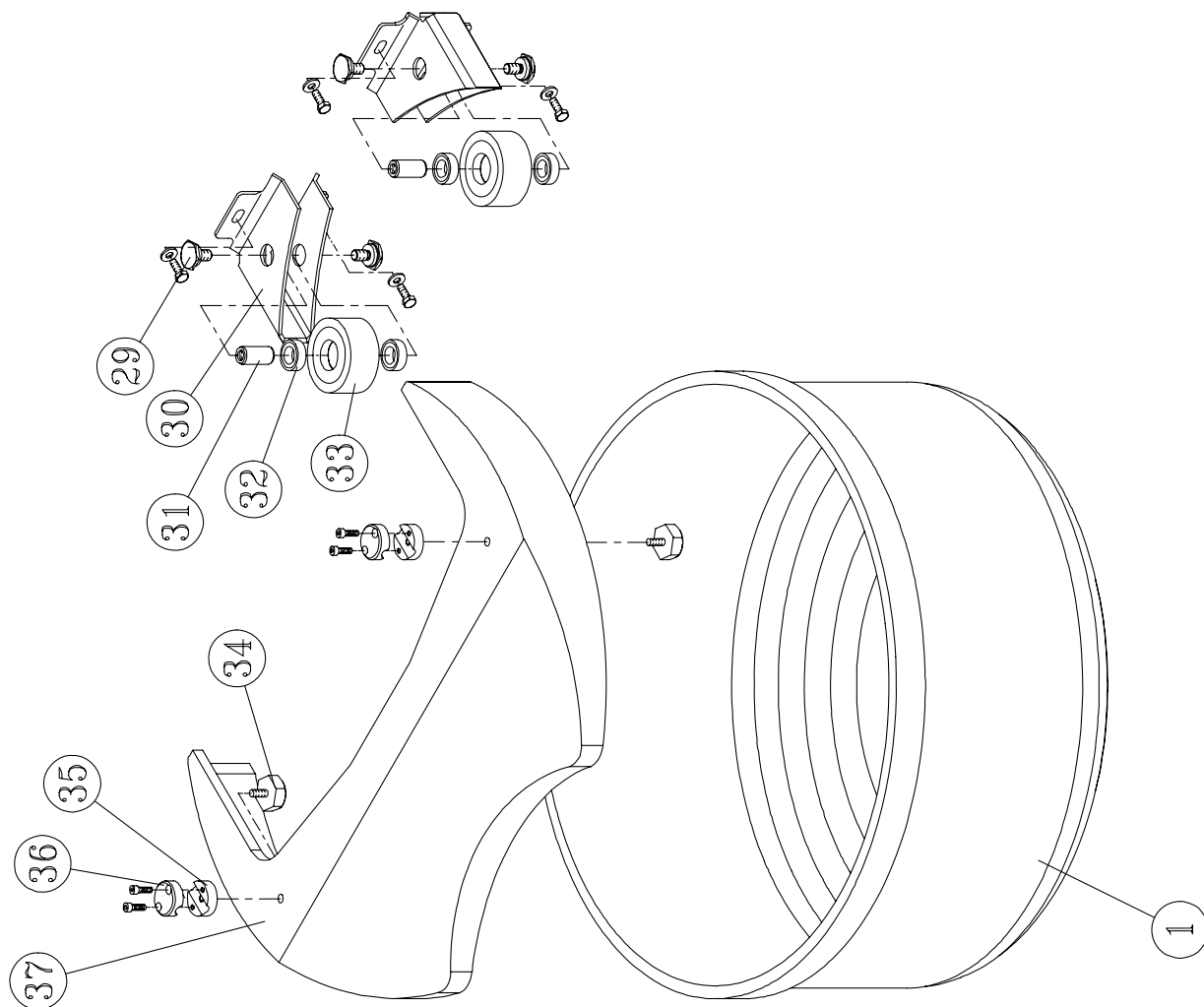
POS.	DESCRIPTION	Qty	CODE
1	Belt SPZ 1987	9	C01220
2	Pulley 50 Hz	1	D11123
	Pulley 60 Hz	1	D11124
3	Bearing 6209 2RS	2	C00003
4	Reinforcing plate	1	D13002
5	Belt SPZ 1037 (for 50 Hz)	6	C01206
	Belt SPZ 1012 (for 60 Hz)	6	C01219
6	Transmission pulley	1	D11109
7	Bearing 6315 2RS	1	C00006
8	Tie rod M12	1	C02918
9	Transmission support	1	D04602
10	Screw TE UNI 5739 M12x130	2	C02012
11	Spiral motor slide	1	D13100
12	Motor	1	*
13	Sump	1	D08203
14	Spiral	1	D12202
15	Screw	3	D15002
16			
17	Spiral shaft	1	D01101
18	MIM ring 95/130x12	1	C11902
19	Column with foot	1	D12102
	Column without foot	1	D12105
20	Bearing 3215	1	C00102
21	Spiral shaft support		D04003
22	Bearing 6313 2RS	1	C00005
23	Pulley	1	D11104
24	Locking assembly	1	C01302

\*) see wiring diagrams

### List 3: Bowl group

POS	DESCRIPTION	Qty	CODE
1	Bowl model 160 – Ø 850	1	D12004
	Bowl model 200 – Ø 910	1	D12005
2	Bowl shaft	1	D01000
3	MIM ring 95/130x12	1	C11902
4	Bearing 3215	1	C00102
5	Bowl shaft support	1	D04001
6	Bearing 6313 2RS	1	C00005
7	Bowl transmission support shaft	1	D01300
8	Threaded C plate	2	D13003
9	Belts SPZ 1750	2	C01216
10	Pulley	1	D11108
11	Tie rod l=560 mm	1	C02921
12	Bearing 6208 2RS	1	C00002
13	Bowl transmission support	1	D04000
14	Locking assembly	1	C01302
15	Bowl pulley	1	D11105
16	Belt SPZ 1750 – mod. 160	7	C01216
	Belt SPZ 1800 – mod. 200	7	C01217
17	Bearing 6208 2RS	1	C00002
18	Seeger ring UNI 7435 E 40	1	C02905
19	Bowl transmission pulley	1	D11115
20	Washer	1	D15101
21	Tie rod l=125 mm	1	C02922
22	Motor slide	1	D13102
23	Cap nut M8 UNI 5721	2	C02401
24	Motor support shaft	1	D01301
25	Motor	1	*
26	Bowl motor pulley	1	D11113
27	Bowl lay shaft	1	D01203
28	Transmission locking assembly	1	C01300
29	Thrust bearing pin support screw	4	D01305
30	Thrust bearing roller support	2	D04102
31	Thrust bearing roller pin	2	D01304
32	Bearing 6204 2RS	4	C00000
33	Trust bearing roller	2	C01408
34	Hexagonal pin for arm	2	D01306
35	Bottom arm bush	2	D05001
36	Top arm bush	2	D05000
37	Removable cover mod. 160	1	D08104
	Removable cover mod. 200	1	D08105

\*) see wiring diagrams



**Table 3: Bowl group – exploded view**

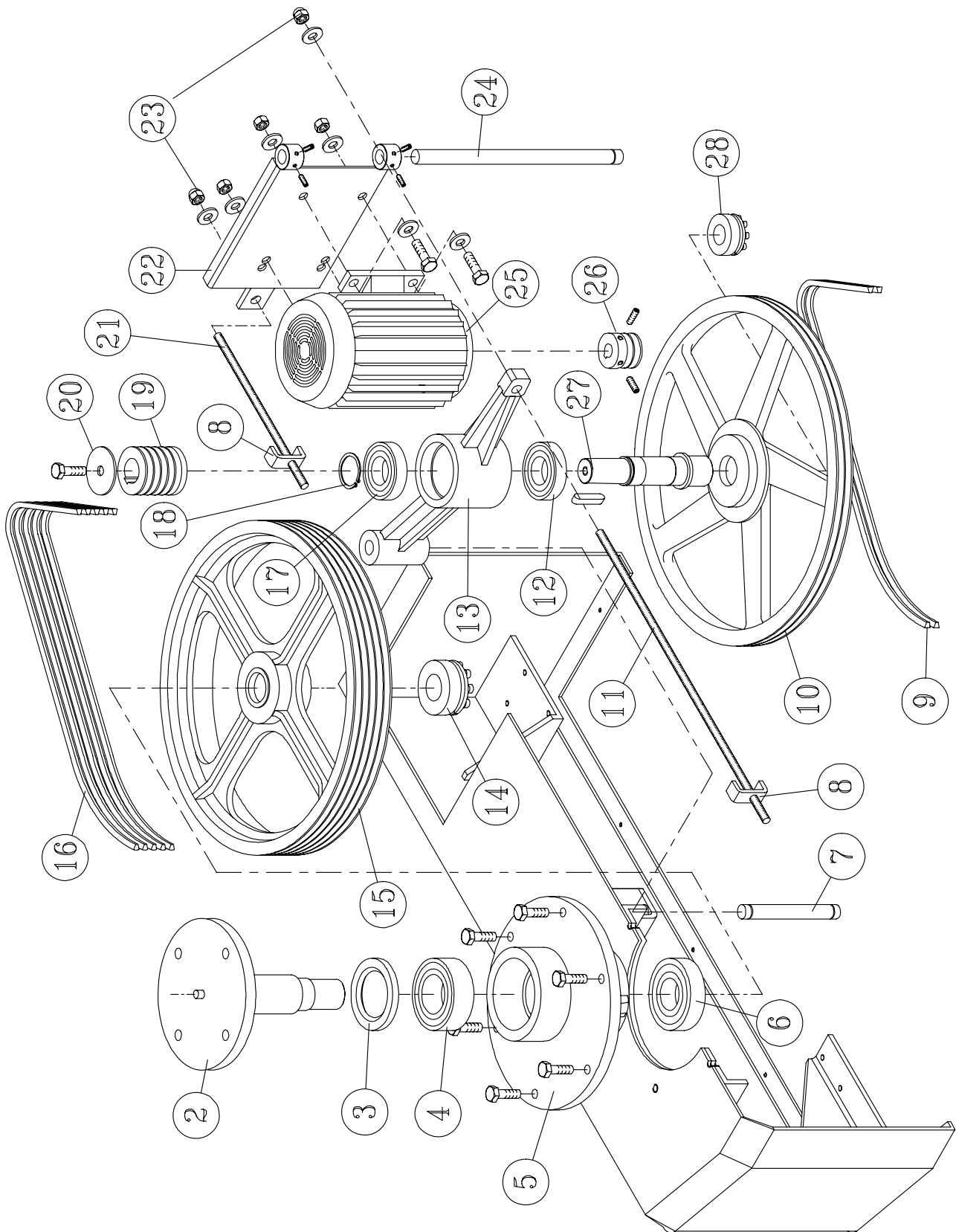
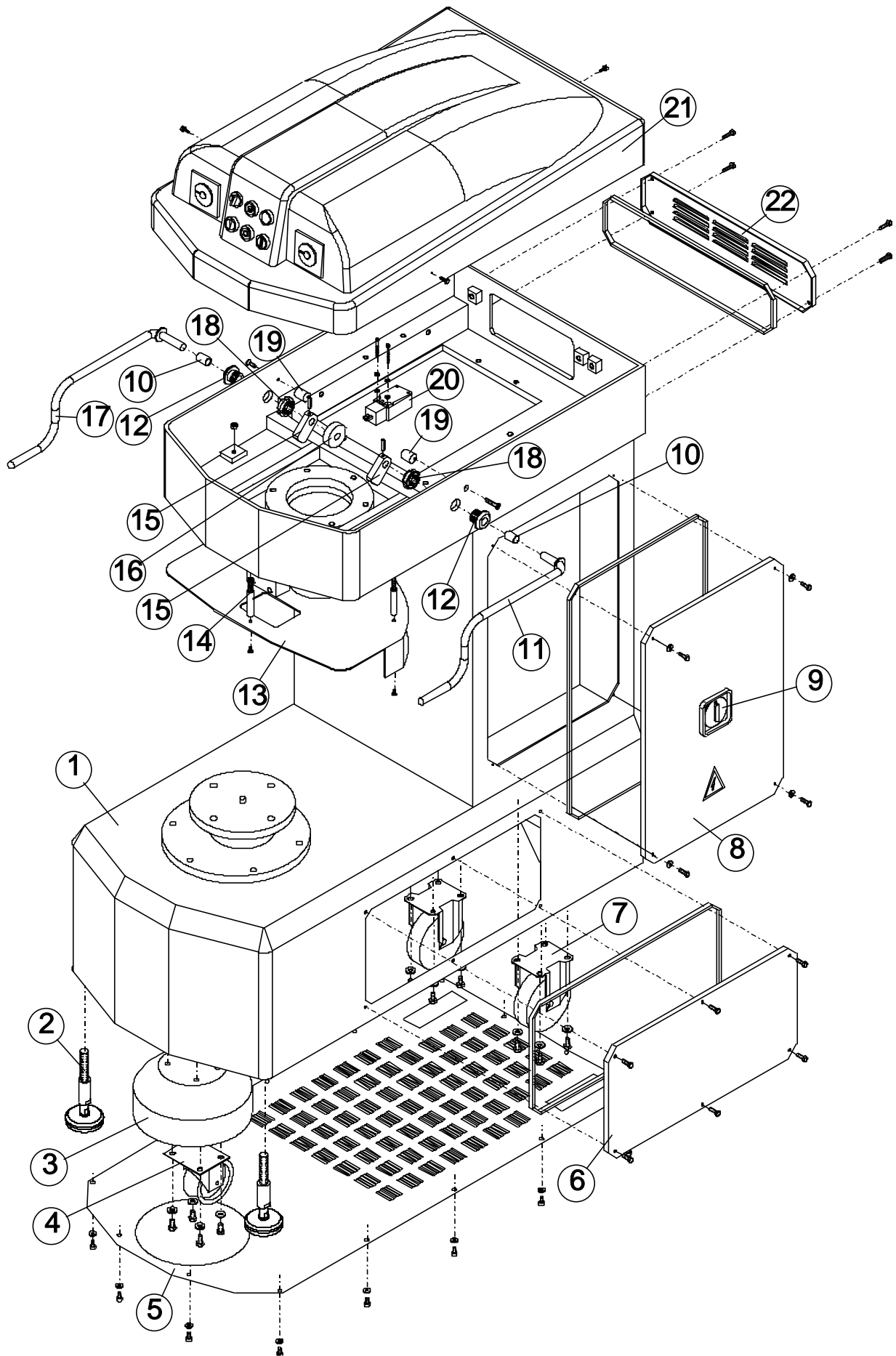


Table 4: Machine structure – exploded view



#### List 4: Machine structure

<b>POS.</b>	<b>DESCRIPTION</b>	<b>Qty</b>	<b>CODE</b>
1	Body	1	D03002
2	Foot	2	C01000
3	Wheel closing casing	1	D08200
4	Caster	1	C01402
5	Mouse protection grid	1	D07402
6	Base door	1	D07000
7	Rear wheel	2	C01403
8	Electric system door	1	D07001
9	Main switch	1	*
10	Bush DU151725	2	C00201
11	RH arm	1	D04502
12	Arm/head coupling bush	2	D05002
13	Fixed guard mod. 160	1	D07304
	Fixed guard mod. 200	1	D07305
14	Fixed guard spacer	3	D01302
15	Guard stop plate	2	D04401
16	Microswitch cam	1	D06000
17	Left arm	1	D04503
18	Ring nut GUK G25	2	C01100
19	Cam bush	2	D05003
20	Safety microswitch	1	*
21	Head cover	1	D08003
22	Back head door	1	D07003

\*see wiring diagrams

