



mondial forni

s.p.a.

via dell' Elettronica, 1 37139 VERONA - ITALY -

Tel./ Phone +39 0458182511

<http://www.mondialforni.it>

-Descrizione impianto -Unit description -Beschreibung der Anlage -Description installation -Descripcion de la instalacion :

TECHNO 2.0 4676 - 6080 - 80100 400 VAC /E

Numero disegno	Drawing number	Zeichnung Nr.	Numèro dessin	Número de esquema	T20E0000
Alimentazione	Power supply	Stromversorgung	Alimentation	Alimentaciòn	400V 3N~ PE TT TN-S
Circuiti ausiliari	Auxiliary circuits	Hilfsschaltungen	Circuitos auxiliares	Circuitos auxiliares	220/230V~
Circuito Luci	Light circuit	Beleuchtungsschaltung	Circuit Lumières	Circuito Luz	12V~
Data di costruzione	Year of manufacture	Baujahr	Annee de fabrication	Fecha de fabricaciòn	2020
Totale pagine	Total pages	Anzahl der Blaetter	Pages totales	Paginas en total	16
Data di modifica	Modification date	Datum der Aenderung	Date modification	Fecha de modificaciòn	08/01/2020



Data	22-01-2018
Diseg.	
Plot.	01-08-2020
Norm.	CE

TECHNO 2.0 4676 - 6080 - 80100 400 VAC /E

--

T20E0000
COPERTINA2

REV. 09	
DATA REV.	08/01/2020
Pag.	1
Pag.TOT	16

FOGLIO / SHEET	TITOLO / TITLE	DESCRIZIONE	DESCRIPTION	DESCRIPCIÓN
1	COPERTINA2			
2	INDICE	INDICE	INDEX	CONTENIDO
2.1	ASSORBIMENTO	ASSORBIMENTO CORRENTE	CURRENT CONSUMPTION	CONSUMO DE CORRIENTE
3	ROTAZIONE E VENTILAZIONE	ROTAZIONE E VENTILAZIONE	ROTATION AND VENTILATION	ROTACIÓN Y VENTILACIÓN
4	CAPPA	CAPPA E SOLLEVAMENTO	HOOD AND LIFTING	CAMPANA Y LEVANTAMIENTO
5	GRUPPO RESISTENZE	GRUPPO RESISTENZE	HEATING GROUP	GRUPO DE RESISTENCIA
6	CONNESSIONE SCHEDA QUADRO	SCHEDA QUADRO	ELECTRONIC BOARD	TABLERO ELECTRÓNICO
7	LUCE, OPTIONALS	LUCI E OPTIONALS	LIGHTS AND OPTIONALS	LUCES Y OPCIONES
8	PORTA, SOLLEVAMENTO	PORTA E SOLLEVAMENTO	DOOR AND LIFTING	PUERTA Y LEVANTAMIENTO
9	CONNESSIONE RESISTENZE	CONNESSIONI RESISTENZE	RESISTANCE CONNECTIONS	CONEXIONES DE RESISTENCIA
10	CONNETTORI PARTE 1	CONNETTORI PARTE 1	CONNECTORS PART 1	PARTE CONECTORES 1
11	CONNETTORI PARTE 2	CONNETTORI PARTE 2	CONNECTORS PART 2	PARTE CONECTORES 2
12	LAYOUT 1	LAYOUT 1	LAYOUT 1	LAYOUT 1
13	LAYOUT 2	LAYOUT 2	LAYOUT 2	LAYOUT 2
14	DISTINTA COMPONENTI	DISTINTA COMPONENTI PARTE 1	PARTS LIST PART 1	LISTA DE COMPONENTES PARTE 1
15	DISTINTA COMPONENTI PARTE2	DISTINTA COMPONENTI PARTE 2	PARTS LIST PART 2	LISTA DE COMPONENTES PARTE 2



Data	08/03/2018
Diseg.	
Plot.	01-08-2020
Norm.	

TECHNO 2.0 4676 - 6080 - 80100 400 VAC /E

INDICE
INDEX
CONTENIDO

T20E0000
INDICE

REV. 09	
DATA REV.	08/01/2020
Pag.	2
Pag.TOT	16

ASSORBIMENTO CORRENTE / CURRENT CONSUMPTION / CONSUMO DE CORRIENTE			
Modello / Model / Modelo	Tensione / Voltage / Tension [V]	Corrente / Current / Corriente [A]	Nota / Note / Nota
4676	400	54,5	
4676	400	71	RESISTENZE RINFORZATE / REINFORCED HEATERS / RESISTENCIAS REFORZADOS
6080	400	72	
6080	400	89	RESISTENZE RINFORZATE / REINFORCED HEATERS / RESISTENCIAS REFORZADOS
80100	400	91.5	
80120	400	130	
80120	400	140	RESISTENZE RINFORZATE / REINFORCED HEATERS / RESISTENCIAS REFORZADOS



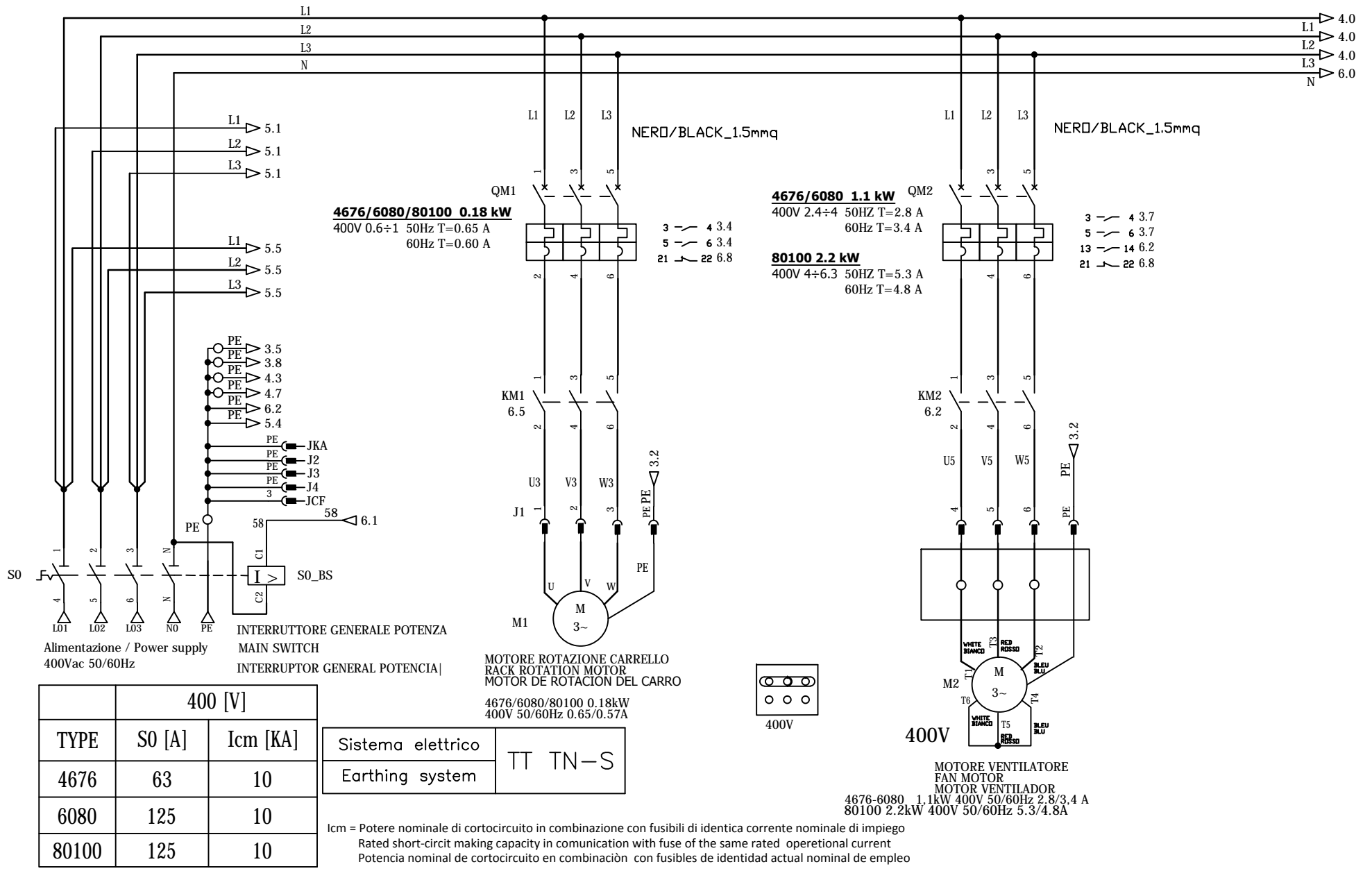
Data	
Diseg.	
Plot.	01-08-2020
Norm.	

TECHNO 2.0 4676 - 6080 - 80100 400 VAC /E

ASSORBIMENTO CORRENTE
CURRENT CONSUMPTION
CONSUMO DE CORRIENTE

T20E0000
ASSORBIMENTI

REV. 09	
DATA REV.	08/01/2020
Pag.	2.1
Pag.TOT	016



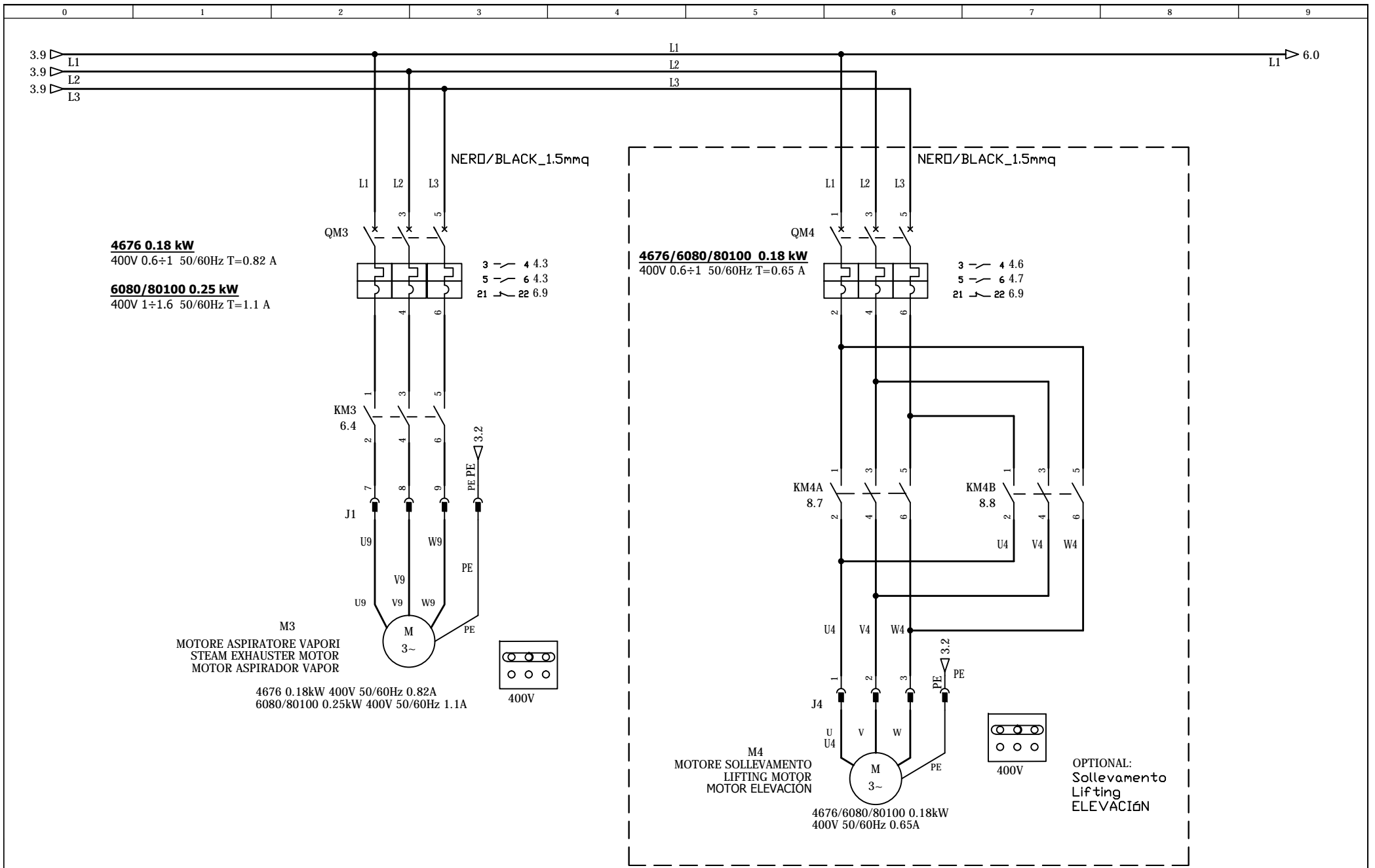
Data	
Diseg.	
Plot.	01-08-2020
Norm.	

TECHNO 2.0 4676 - 6080 - 80100 400 VAC / E

ROTAZIONE E VENTILAZIONE
ROTATION AND VENTILATION
ROTACION Y VENTILACION

T20E0000
ROTAZIONE E VENTILAZIONE

REV. 09	
DATA REV.	08/01/2020
Pag.	3
Pag.TOT	16



Data	
Disegn.	
Plot.	01-08-2020
Norm.	

TECHNO 2.0 4676 - 6080 - 80100 400 VAC /E

CAPPA E SOLLEVAMENTO
HOOD AND LIFTING
CAMPAÑA Y LEVANTAMIENTO

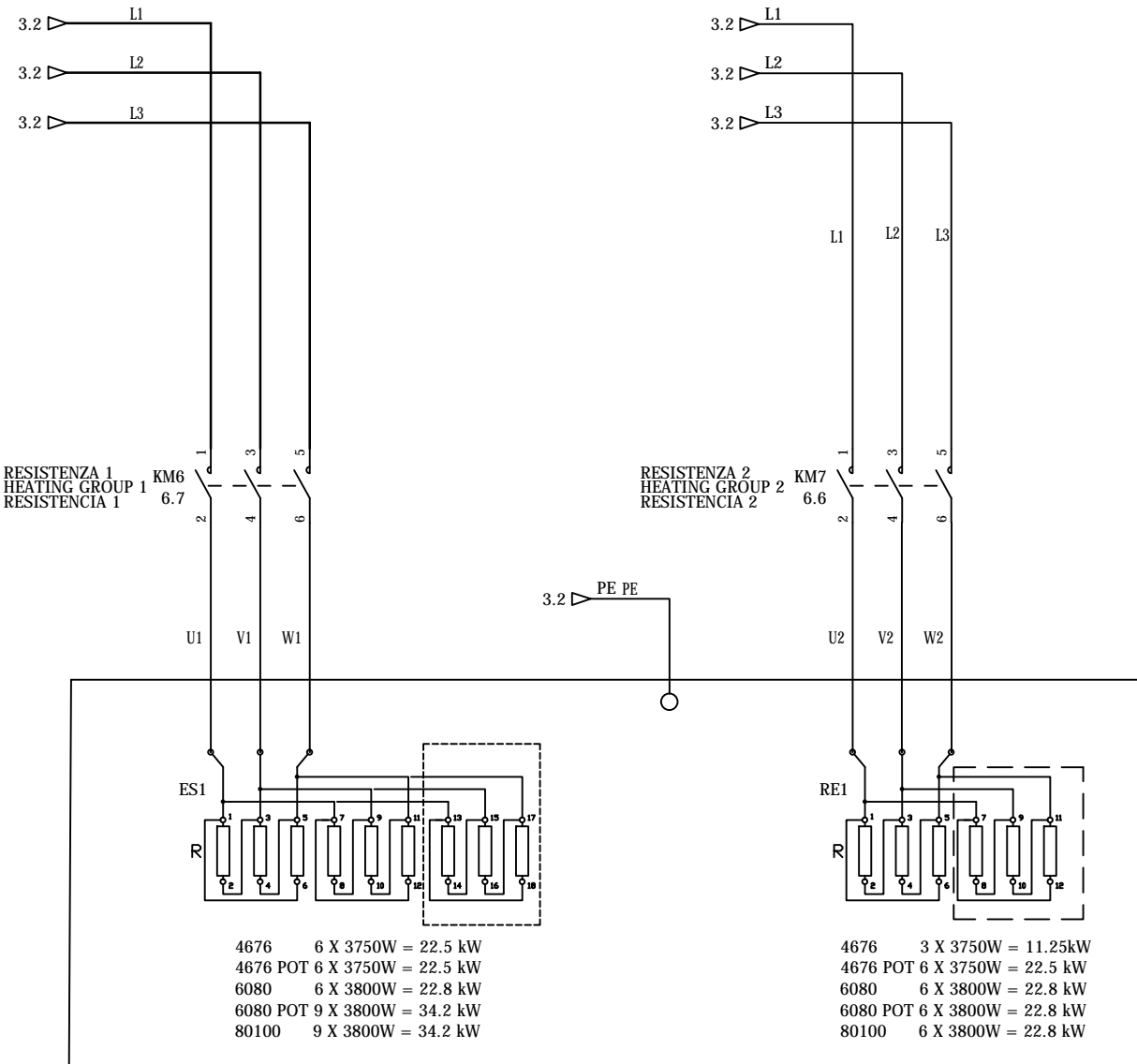
T20E0000

CAPPA

REV. 09
DATA REV. 08/01/2020

Pag. 4

Pag.TOT 16



FILE / WIRES / CABLES 1L1-1L2-1L3 KM6-KM7 PVC [mm2]		
MODEL	KM6	KM7
4676	16mm2	6mm2
4676 POT 6080	16mm2	16mmq
6080 POT 80100	25mm2	16mm2

FILE / WIRES / CABLES 1L1-1L2-1L3 KM6-KM7 [mm2] HIGH TEMPERATURE		
MODEL	KM6	KM7
4676	10mm2	6mm2
4676 POT 6080	10mm2	10mm2
6080 POT 80100	16mm2	10mm2

KM6 KM7		
MODEL	KM6	KM7
4676	NC1-40	NC1-32
4676 POT 6080	NC1-40	NC1-40
6080 POT 80100	NC1-65	NC1-40



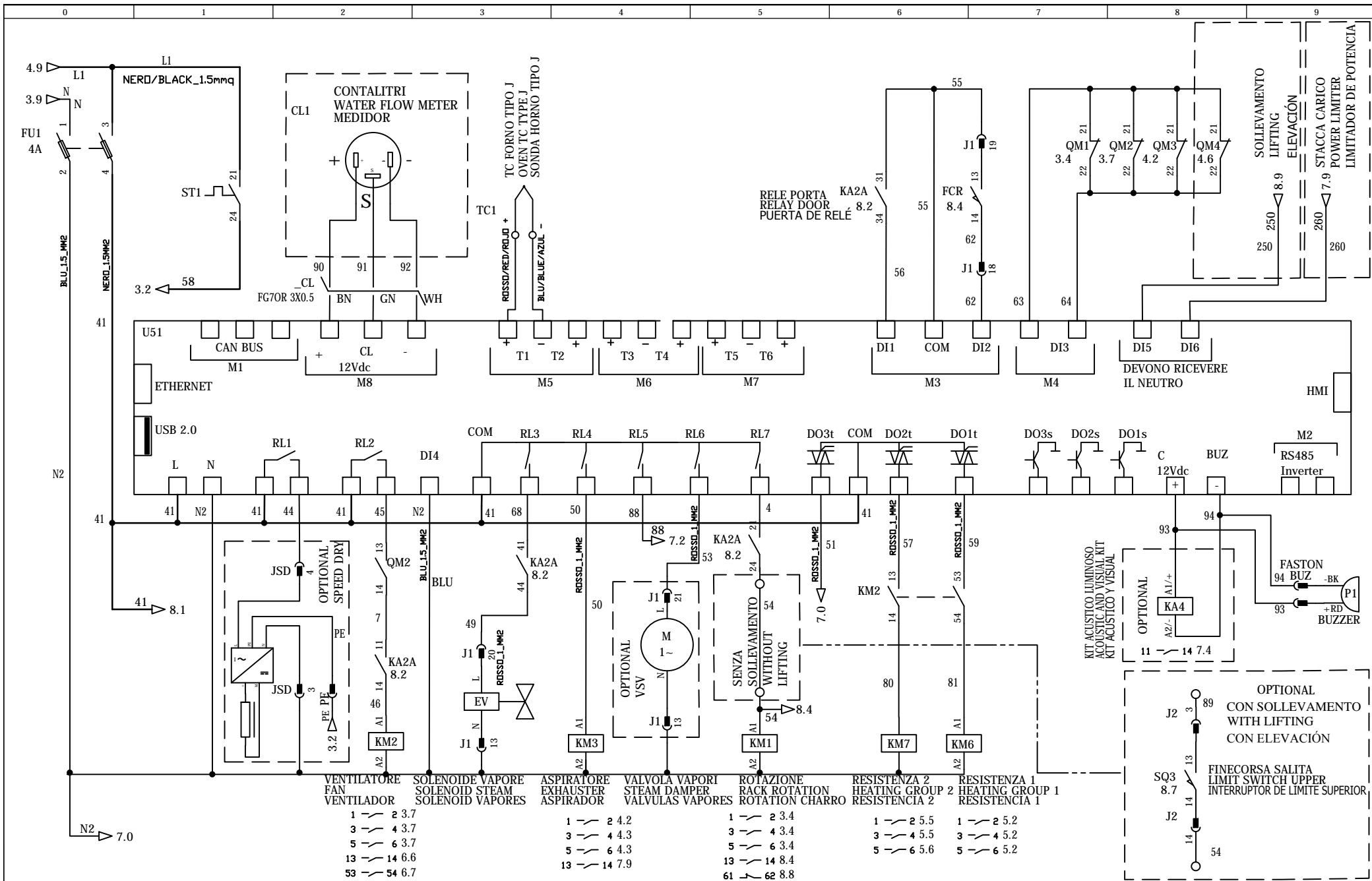
Data	
Diseg.	
Plot.	01-08-2020
Norm.	

TECHNO 2.0 4676 - 6080 - 80100 400 VAC /E

GRUPPO RESISTENZE
HEATING GROUP
GRUPO DE RESISTENCIA

T20E0000
GRUPPO RESISTENZE

REV. 09	
DATA REV.	08/01/2020
Pag.	5
Pag.TOT	16



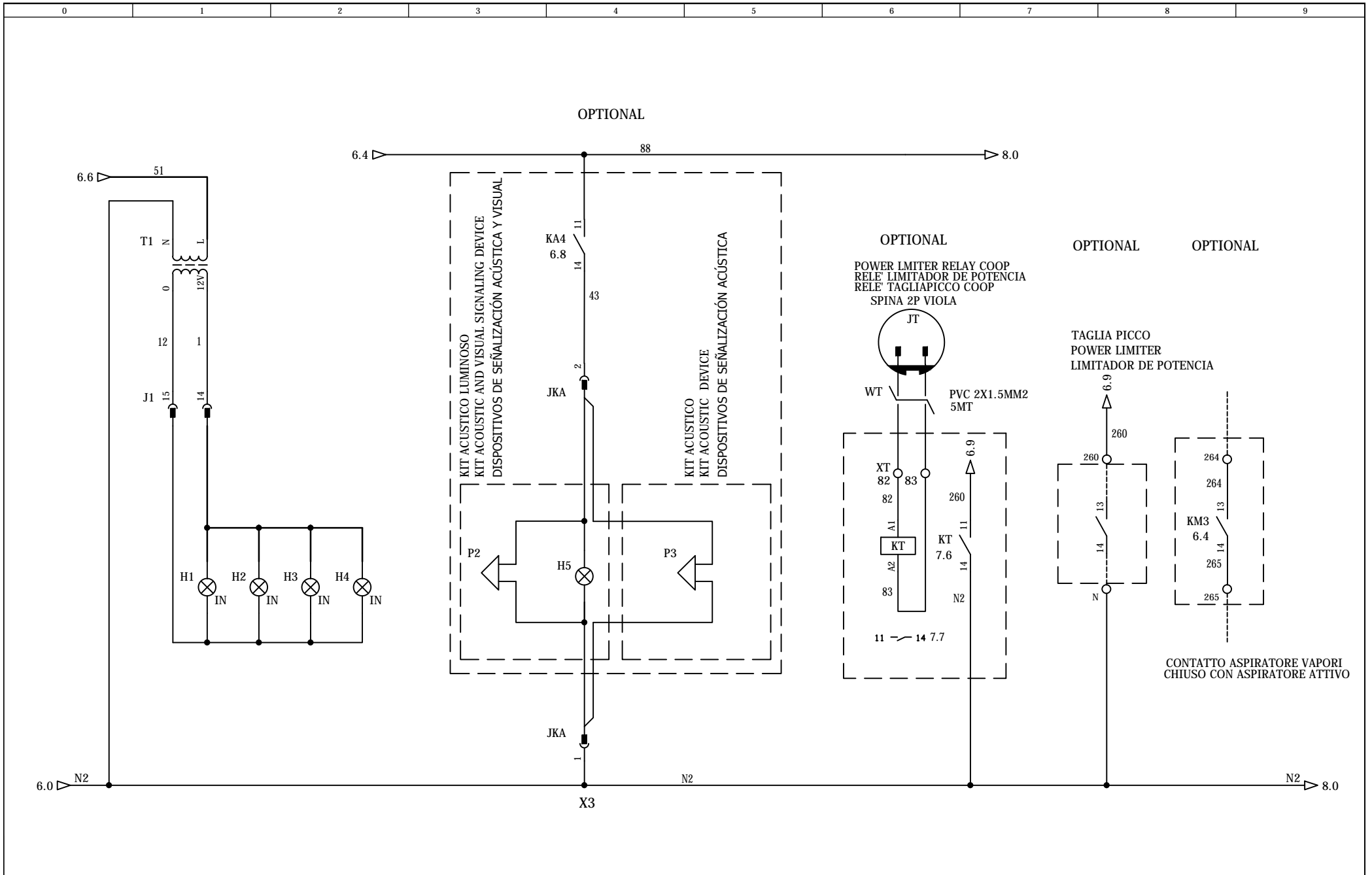
Data	
Disegn.	
Plot.	01-08-2020
Norm.	

TECHNO 2.0 4676 - 6080 - 80100 400 VAC /E

SCHEDA QUADRO
 ELECTRONIC BOARD
 TABLERO ELECTRONICO

T20E0000
 CONNESSIONE SCHEDA QUADRO

REV. 09	
DATA REV.	08/01/2020
Pag.	6
Pag.TOT	16



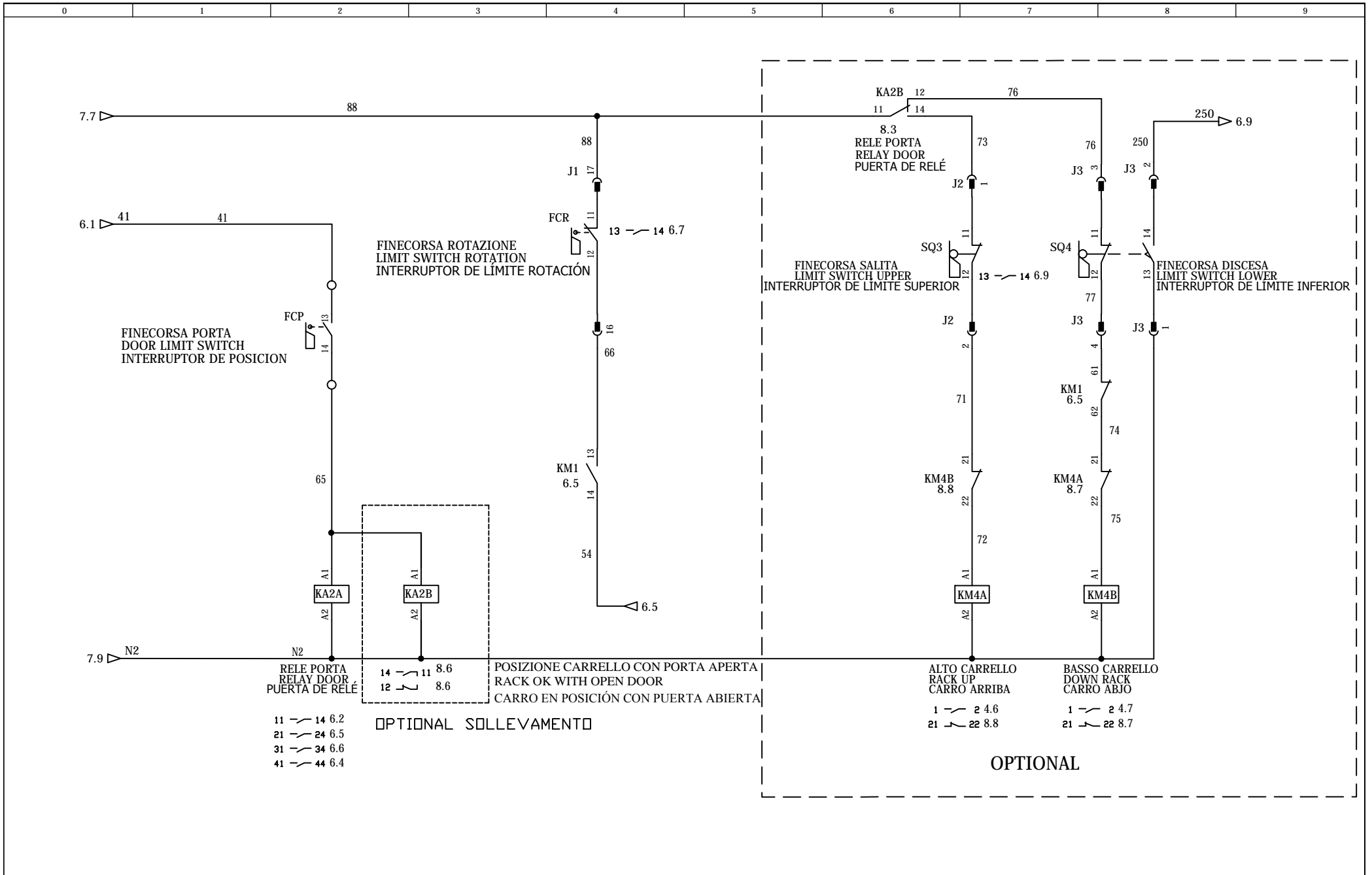
Data	
Diseg.	
Plot.	01-08-2020
Norm.	

TECHNO 2.0 4676 - 6080 - 80100 400 VAC /E

LUCE E OPTIONALS
LIGHTS AND OPTIONALS
LUCES Y OPCIONES

T20E0000
LUCE, OPTIONALS

REV. 09	
DATA REV.	08/01/2020
Pag.	7
Pag.TOT	16



Data	
Diseg.	
Plot.	01-08-2020
Norm.	

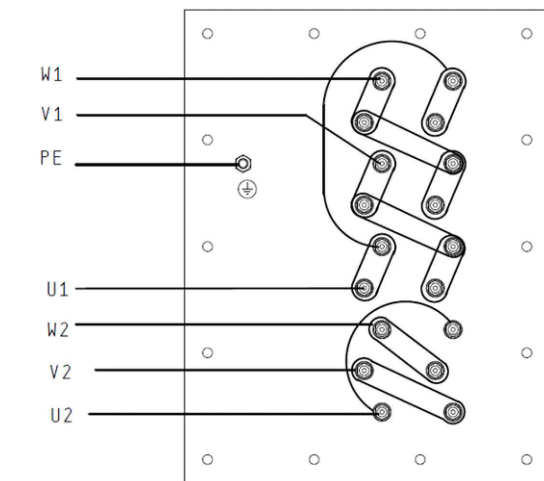
TECHNO 2.0 4676 - 6080 - 80100 400 VAC /E

PORTA E SOLLEVAMENTO
DOOR AND LIFTING
PUERTA Y LEVANTAMIENTO

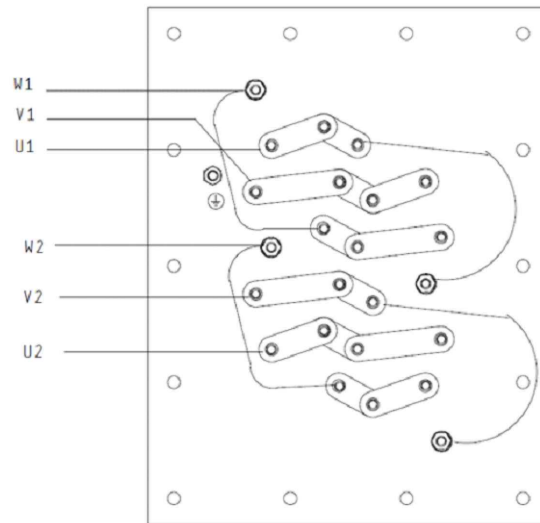
T20E0000

PORTA, SOLLEVAMENTO

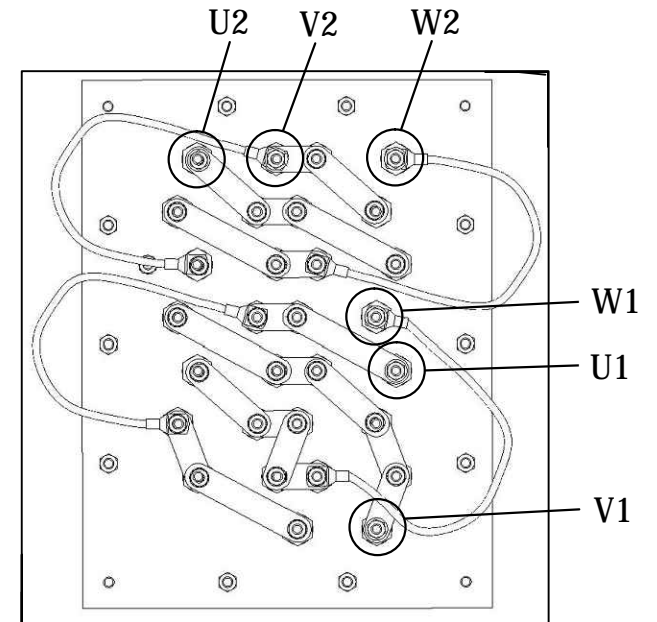
REV. 09	
DATA REV. 08/01/2020	
Pag. 8	
Pag.TOT 16	



4676 = 33.75 kW



4676 POT = 45 kW
6080 = 45.6 kW



6080 POT = 57 kW
80100 = 57 kW



Data	
Diseg.	
Plot.	01-08-2020
Norm.	

TECHNO 2.0 4676 - 6080 - 80100 400 VAC /E

CONNESSIONI RESISTENZE
RESISTANCE CONNECTIONS
CONEXIONES DE RESISTENCIA

T20E0000	REV. 09
CONNESSIONE RESISTENZE	DATA REV. 08/01/2020

Pag.	9
Pag.TOT	16

J1				
CONNECTOR TAG	PIN	WIRE NUMBER	PAGE	REF
J1	1	U3	3	4
J1	2	V3	3	4
J1	3	W3	3	4
J1	4	U5	3	7
J1	5	V5	3	7
J1	6	W5	3	7
J1	7	U9	4	2
J1	8	V9	4	3
J1	9	W9	4	3
J1	10	FREE		
J1	11	FREE		
J1	12	FREE		
J1	13	N2	6	3
J1	14	1	7	1
J1	15	12	7	1
J1	16	66	8	4
J1	17	88	8	4
J1	18	62	6	7
J1	19	55	6	7
J1	20	49	6	3
J1	21	53	6	5
J1	22	FREE		
J1	23	FREE		
J1	24	FREE		

J2				
CONNECTOR TAG	PIN	WIRE NUMBER	PAGE	REF
J2	PE	PE	3	2
J2	1	73	8	6
J2	2	71	8	6
J2	3	89	6	9
J2	4	54	6	9

J3				
CONNECTOR TAG	PIN	WIRE NUMBER	PAGE	REF
J3	PE	PE	3	2
J3	1	N2	8	9
J3	2	250	8	9
J3	3	76	8	8
J3	4	77	8	8

J4				
CONNECTOR TAG	PIN	WIRE NUMBER	PAGE	REF
J4	PE	PE	4	7
J4	1	U4	4	6
J4	2	V4	4	6
J4	3	W4	4	7
J4	4	FREE		



Data	
Diseg.	
Plot.	01-08-2020
Norm.	

TECHNO 2.0 4676 - 6080 - 80100 400 VAC /E

CONNETTORI PARTE 1
CONNECTORS PART 1
PARTE CONECTORES 1

T20E0000
CONNETTORI PARTE 1

REV. 09	
DATA REV.	08/01/2020
Pag.	10
Pag.TOT	16

JSD				
CONNECTOR TAG	PIN	WIRE NUMBER	PAGE	REF
JSD	1	FREE		
JSD	2	FREE		
JSD	3	N2	6	2
JSD	4	44	6	2

JKA				
CONNECTOR TAG	PIN	WIRE NUMBER	PAGE	REF
JKA	PE	PE	3	2
JKA	1	N2	7	4
JKA	2	43	7	4
JKA	3	FREE		



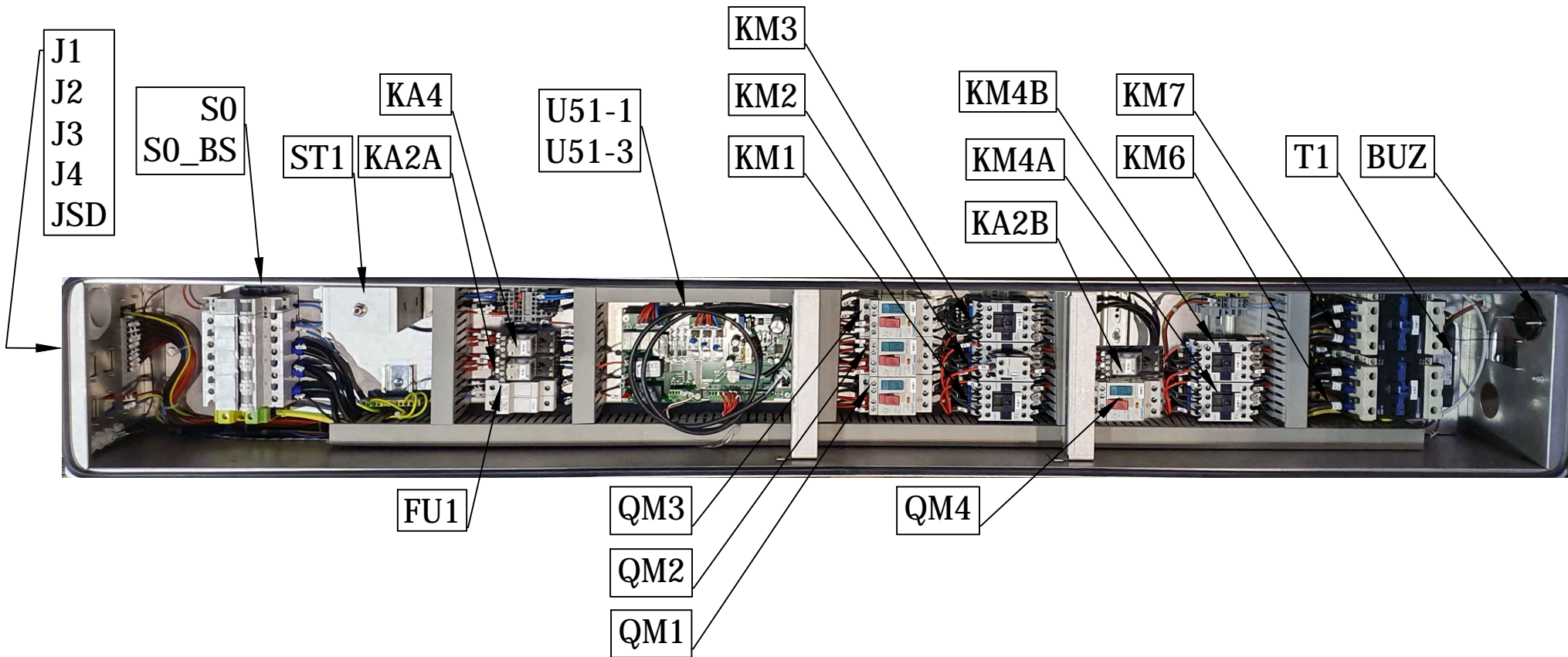
Data	
Diseg.	
Plot.	01-08-2020
Norm.	

TECHNO 2.0 4676 - 6080 - 80100 400 VAC /E

CONNETTORI PARTE 2
CONNECTORS PART 2
PARTE CONECTORES 2

T20E0000
CONNETTORI PARTE 2

REV. 09	
DATA REV.	08/01/2020
Pag.	11
Pag.TOT	16



Data	
Diseg.	
Plot.	01-08-2020
Norm.	

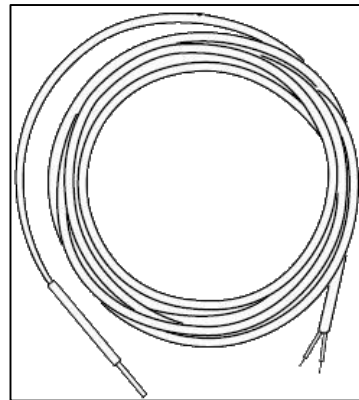
TECHNO 2.0 4676 - 6080 - 80100 400 VAC /E

LAYOUT 1
LAYOUT 1
LAYOUT 1

T20E0000
LAYOUT 1

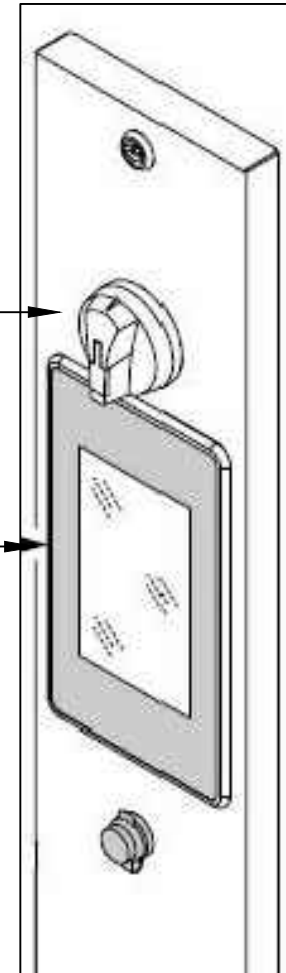
REV. 09	
DATA REV.	08/01/2020
Pag.	12
Pag.TOT	16

TC1



S0-4

U51-2



Data	
Diseg.	
Plot.	01-08-2020
Norm.	

TECHNO 2.0 4676 - 6080 - 80100 400 VAC /E

LAYOUT 2
LAYOUT 2
LAYOUT 2

T20E0000
LAYOUT 2

REV. 09	
DATA REV.	08/01/2020
Pag.	13
Pag.TOT	16

TAG	POS	INST.	PAG.	RIF	TYPE	COD.ART	DESCR.	DESCRIZIONE	DESCRIPTION	DESCRIPCIÓN
S0	S0-1 S0-2 S0-3 S0-4 S0-5		3	0	SIEMENS SIEMENS SIEMENS SOCOMECS SOCOMECS	74101500 74101501 74101560 N30EB125 74105308	INTERRUTTORE SEZIONATORE 63A 5TE2514-0 INTERRUTTORE SEZIONATORE 125A 5TE2814-0 COMANDO ROTATIVO 5ST3060 IP65 ASSE PER COMANDO ESTERNO SOCOMECS/SIEMENS MANOVRA C.DO NERA 14731111	INTERRUTTORE GENERALE POTENZA	MAIN SWITCH	INTERRUPTOR GENERAL POTENCIA
SO_BS	SO-BS		3	2	SIEMENS	74101550	BOBINA DI SGANCIO A LANCIO CORRENTE 5ST3030 110-415VAC			
J1	J1-1 J1-2		3	4	HARTING HARTING	740314 740304	CUSTOD FISSA INCASSO 24P 9300240301 FRUTTO PRESA F 24P 9330242701	BIG ILME 24P	BIG ILME 24P	BIG ILME 24P
QM1	QM1		3	4	CHINT	7412802	INT. MAGNETO 0,6-1 NS2-25/0E CHINT	MAGNETOTERMICO ROTAZIONE	ROTATION CIRCUIT BREAKER	INTERRUPTOR AUTOMÁTICO ROTACIÓN
QM2	QM2	4676 - 6080 80100	3	7	CHINT CHINT	7412861 7412881	INT. MAGNETO 2.5-4 NS2-25/1C CHINT INT. MAGNETO 4-6.3 NS2-25/1D CHINT	MAGNETOTERMICO VENTILAZIONE	FAN CIRCUIT BREAKER	INTERRUPTOR AUTOMÁTICO VENTILADOR
QM3	QM3	4676 6080 - 80100	4	2	CHINT CHINT	7412802 7412821	INT. MAGNETO 0,6-1 NS2-25/0E CHINT INT. MAGNETO 1-1,6 NS2-25/1A CHINT	MAGNETOTERMICO ASPIRATORE VAPORI	STEAM EXHAUSTER CIRCUIT BREAKER	INTERRUPTOR AUTOMÁTICO ASPIRADOR VAPOR
J4	J4-1 J4-2		4	6	HARTING HARTING	740332 740330	CUSTOD FISSA 3P 9200030301 FRUTTO PRE F 3P+T 9200032711	SOLLEVAMENTO	LIFTING	ELEVACIÓN
QM4	QM4		4	6	CHINT	7412802	INT. MAGNETO 0,6-1 NS2-25/0E CHINT	MAGNETOTERMICO VENTILAZIONE	FAN CIRCUIT BREAKER	INTERRUPTOR AUTOMÁTICO ELEVACIÓN
FU1	FU1-1 FU1-2		6	0	LEGRAND LEGRAND	741491 741493	PORTAFUSIBILE SEZ 2P 10X38 FUSIBILE 10,3X38 4A LEGRAND 13304			
ST1	ST1		6	1	EGO	74163200	TERMOST.SIC. EL.MECC. T350-25C	TERMOSTATO SIC ST1	SAFETY THERM. ST1	TERMOSTATO DE SEGURIDAD
U51	U51-1 U51-2 U51-3		6	1	MF MF MF	74158980 N30EB032 741589951	SCHEDA QUADRO ASS. MONTAGGIO NEW TOUCH PANEL CAVO CONN. LCD 7" FC05-10P01 MF	SCHEDA RELE'	RELAY PCB	CIRCUITO IMPRESO RELE'
CL1	CL1		6	2	GICAR	710530	CONTALITRI FMP-C-L	CONTALITRI	WATER FLOW METER	MEDIDOR
JSD	JSD-1 JSD-2		6	2	HARTING HARTING	740332 740334	CUSTOD FISSA 3P 9200030301 FRUTTO PRE F 4P+T 920042711	SPEED DRY	SPEED DRY	SPEED DRY
KM2	KM2-1 KM2-2 KM2-3		6	2	CHINT CHINT CHINT	7411111 7411171 7411812	CONT 3P+1NA 220V NC1-09.10 BLOCCHETTO 1NA-1NC NC1F411 SUPERIORE FILTRO ANTIDISTURBO CONTATTORI NC1	VENTILATORE	FAN	VENTILADOR
EV	EV		6	3	..	710438	ELETTROVALVOLA ACQUA 220V	SOLENOIDE VAPORE	SOLENOID STEAM	SOLENOID VAPORES
TC1	TC1		6	3	TERMOTECH	7416072	TERMOCOP FE-COST MT 4 KAPTON ARM D6X50	TERMOCOPPIA REG.TEMPERATURA	TEMPERATURE ADJ. THERMOCOUPLE	SONDA REGULACION TEMPERATURA
KM3	KM3-1 KM3-2		6	4	CHINT CHINT	7411111 7411812	CONT 3P+1NA 220V NC1-09.10 FILTRO ANTIDISTURBO CONTATTORI NC1	ASPIRATORE	EXHAUSTER	ASPIRADOR



Data	
Diseg.	
Plot.	01-08-2020
Norm.	


TECHNO 2.0 4676 - 6080 - 80100 400 VAC /E

DISTINTA COMPONENTI PARTE 1
PARTS LIST PART 1
LISTA DE COMPONENTES PARTE 1

T20E0000
DISTINTA COMPONENTI

REV. 09	
DATA REV.	08/01/2020
Pag.	14
Pag.TOT	16

TAG	POS	INST.	PAG.	RIF	TYPE	COD.ART	DESCR.	DESCRIZIONE	DESCRIPTION	DESCRIPCIÓN
KM1	KM1-1 KM1-2 KM1-3		6	5	CHINT CHINT CHINT	7411111 7411171 7411812	CONT 3P+1NA 220V NC1-09.10 BLOCCHETTO 1NA-1NC NC1F411 SUPERIORE FILTR0 ANTIDISTURBO CONTATTORI NC1	ROTAZIONE	RACK ROTATION	ROTATION CHARRO
VSV	VSV		6	5	BELIMO	704577	SERVOMOT BELIMO TF230 AC 230V 2NM	VALVOLA VAPORI	STEAM DAMPER	VALVULAS VAPORES
KM7	KM7-1 KM7-1 KM7-2	4676 6080 - 80100	6	6	CHINT CHINT CHINT	7410972 7411051 7411812	CONT 3P+1NA 220V NC1-32.10 CONT 3P+1NO+1NC 220V NC1-40.11 FILTR0 ANTIDISTURBO CONTATTORI NC1	RESISTENZA 2	HEATING GROUP 2	RESISTENCIA 2
KM6	KM6-1 KM6-1 KM6-2	4676 - 6080 80100	6	7	CHINT CHINT CHINT	7411051 7411081 7411812	CONT 3P+1NO+1NC 220V NC1-40.11 CONT 3P+1NO+1NC 220V NC1-65.11 FILTR0 ANTIDISTURBO CONTATTORI NC1	RESISTENZA 1	HEATING GROUP 1	RESISTENCIA 1
KA4	KA4-1 KA4-2		6	8	OMRON OMRON	741338 741337	RELE' 12VDC G2R-1SN-DC12(S) ZOCOLO RELE' 1P P2RF-05-ESS	KIT ACUSTICO LUMINOSO	ACOUSTIC AND VISUAL KIT	KIT ACÚSTICO Y VISUAL
P1	P1		6	9	MURATA	741443	BUZZER NERO 12VDC UC088022 COLL. EST.	BUZZER	BUZZER	BUZZER
H1 H2 H3 H4	H1 H2 H3 H4		7	1	OSRAM	740750	LAMP HALOSTAR 12V 20W G4 H H64428	LUCI FORNO	OVEN LIGHTS	LUCES HORNO
T1	T1		7	1	TCI OSRAM	7412232 7412232	TRASF ELETTRONICO WU105 105/220V TRASF ELETTRONICO ET-PARROT 105/220V	TRASFORMATORE LUCI	TRANSFORMER LIGHT	TRANSFORMADOR DE LUZ
JKA	JKA-1 JKA-2		7	4	HARTING HARTING	740332 740330	CUSTOD FISSA 3P 9200030301 FRUTTO PRE F 3P+T 9200032711	KIT ACUSTICO LUMINOSO	ACOUSTIC AND VISUAL KIT	KIT ACÚSTICO Y VISUAL
JT	JT		7	7	GEWISS	74030048	SPINA MOBILE 2P GEWISS60 064 16A IP44 24V	SPINA 2P VIOLA		
KT	KT-1 KT-2		7	7	OMRON OMRON	741334 741325	ZOCOLO 4P MINIAT. OMRON PYF14.ESS RELE' MINIAT 24VAC OMRON MY4	RELE' TAGLIAPICCO COOP	POWER LMITER RELAY COOP	RELE' LIMITADOR DE POTENCIA
FCP	FCP		8	2	OMRON	741355	FINE CORSA ANGOL. A LEVETTA D4B-4111N	FINECORSA PORTA	DOOR LIMIT SWITCH	INTERRUPTOR DE POSICION
KA2A	KA2-1,2,3,4		8	2	OMRON OMRON	741334 741324	ZOCOLO 4P MINIAT. OMRON PYF14.ESS RELE' 230VAC 4 CONT. MY4	RELE PORTA	RELAY DOOR	PUERTA DE RELÉ
KA2B	KA2B-1		10	2	OMRON	741319 74134201	ZOCOLO 2P MINIATURA P2RF08ESS RELE' 230VAC 2 CONT. G2R2S230AC 5A	RELE PORTA	DOOR RELAY	RELÉ DE PUERTA
FCR	FCR		8	4	OMRON	741355	FINE CORSA ANGOL. A LEVETTA D4B-4111N	FINECORSA ROTAZIONE	LIMIT SWITCH ROTATION	INTERRUPTOR DE LÍMITE ROTACIÓN
J2	J2-1 J2-2		8	7	HARTING HARTING	740332 740334	CUSTOD FISSA 3P 9200030301 FRUTTO PRE F 4P+T 920042711	ALTO CARRELLO	RACK UP	CHARRO ARRIBA
KM4A	KM4A-1 KM4A-2		8	7	CHINT CHINT	7411111 7411812	CONT 3P+1NA 220V NC1-09.10 FILTR0 ANTIDISTURBO CONTATTORI NC1	ALTO CARRELLO	RACK UP	CARRO ARRIBA
SQ3	SQ3		8	7	OMRON	74135400	FINECORSA A PULSANTE OMRON D4B-4170N	FINECORSA SALITA	LIMIT SWITCH UPPER	INTERRUPTOR DE LÍMITE SUPERIOR
J3	J3-1 J3-2		8	8	HARTING HARTING	740332 740334	CUSTOD FISSA 3P 9200030301 FRUTTO PRE F 4P+T 920042711	BASSO CARRELLO	DOWN RACK	CHARRO ABJO
KM4B	KM4B-1 KM4B-2		8	8	CHINT CHINT	7411111 7411812	CONT 3P+1NA 220V NC1-09.10 FILTR0 ANTIDISTURBO CONTATTORI NC1	BASSO CARRELLO	DOWN RACK	CARRO ABJO
SQ4	SQ4		8	8	OMRON	74135400	FINECORSA A PULSANTE OMRON D4B-4170N	FINECORSA DISCESA	LIMIT SWITCH LOWER	INTERRUPTOR DE LÍMITE INFERIOR

	Data		TECHNO 2.0 4676 - 6080 - 80100 400 VAC /E	DISTINTA COMPONENTI PARTE 2 PARTS LIST PART 2 LISTA DE COMPONENTES PARTE 2	T20E0000	REV. 09
	Diseg.					DATA REV. 08/01/2020
	Plot.	01-08-2020				Pag. 15
	Norm.					Pag.TOT 16